



FIRST FLOOR PLAN

JOINERY DETAILS				LINTEL LEVEL	
S.NO.	TYPE OF OPENING	NUMBER OF ITEMS	DESIGNATION	WIDTH	HEIGHT
1	DOOR	2	MD	2100	2400
2	DOOR	3	D1	1200	2400
3	DOOR	18	D2	1000	2400
4	DOOR	6	D3	750	2400
5	WINDOW	22	SW1	1800	1500
6	WINDOW	5	SW2	1200	1500
7	VENTILATOR	29	V	600	450

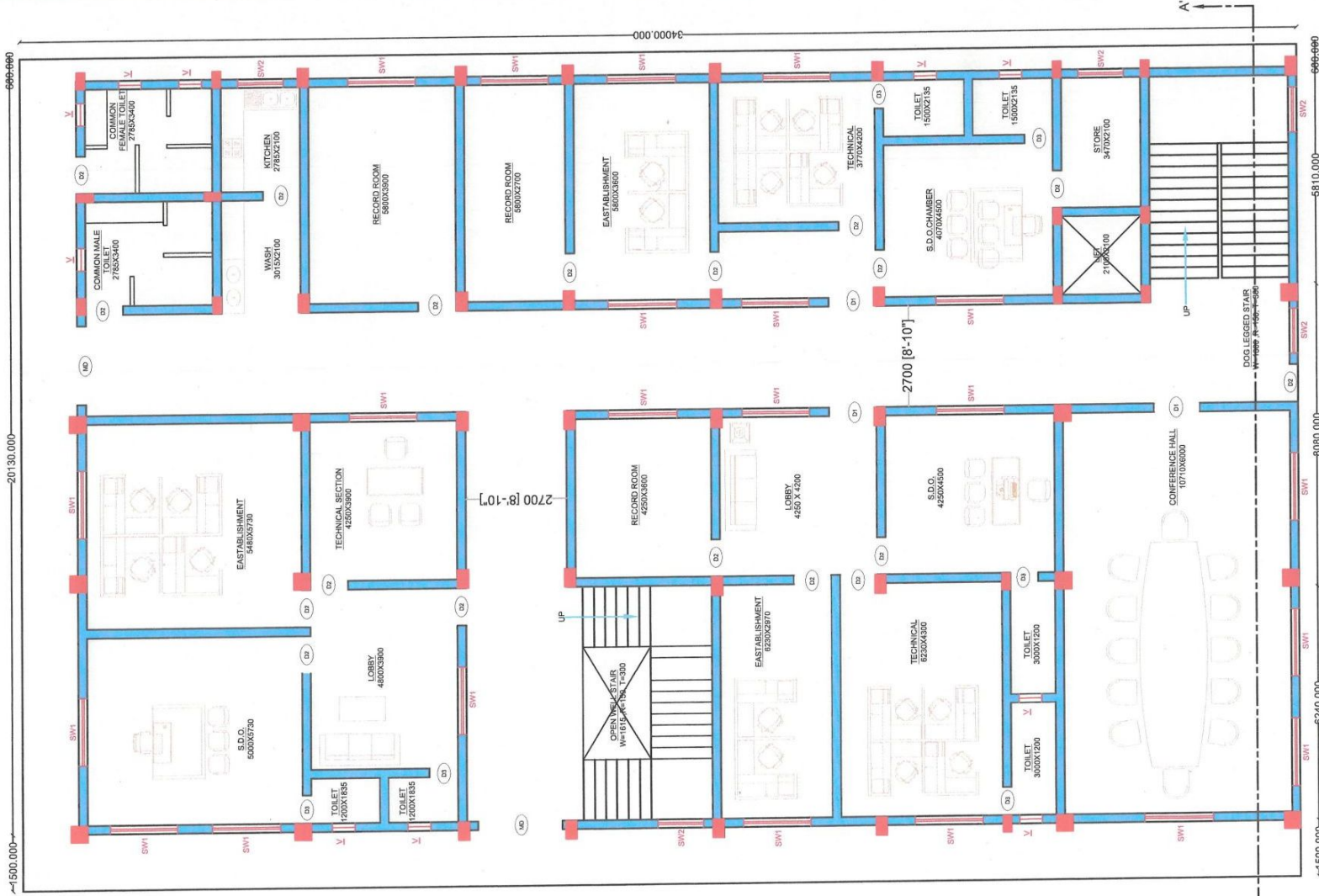


DRAWING NAME :-

FIRST FLOOR PLAN
PLINTH AREA=654.14 SQM.
SLAB AREA=755.82 SQM.

SCALE :- 1:120

GOVERNMENT OF CHHATTISGARH, WATER RESOURCES DEPARTMENT					
WATER RESOURCES DIVISION NO. 01 AMBIKAPUR					
RENOVATION WORK OF THE OFFICE OF EXECUTIVE ENGINEER					
WATER RESOURCES DIVISION NO. 1 AMBIKAPUR					
PREPARED BY SUB ENGINEER SHYAM CANAL SUB DIV NO. 01 AMBIKAPUR (C.G.)	CHECKED BY ASSISTANT ENGINEER (D) W.R. SHYAM BARNAI P. CIRCLE AMBIKAPUR (C.G.)	CHECKED BY ASSISTANT ENGINEER (D) HASDEO GANGA BASIN AMBIKAPUR (C.G.)			
CHECKED BY SUB DIVISIONAL OFFICER SHYAM KAKAL SUB DIV NO. 01 AMBIKAPUR (C.G.)	CHECKED BY EXECUTIVE ENGINEER (D) W.R. SHYAM BARNAI P. CIRCLE AMBIKAPUR (C.G.)	CHECKED BY EXECUTIVE ENGINEER (D) HASDEO GANGA BASIN AMBIKAPUR (C.G.)			
CHECKED BY ASSISTANT ENGINEER (D) WATER RESOURCES DIVISION NO.1 AMBIKAPUR (C.G.)	RECOMMENDED BY	RECOMMENDED BY			
SUBMITTED BY EXECUTIVE ENGINEER WATER RESOURCES DIVISION NO.1 AMBIKAPUR (C.G.)	RECOMMENDED BY SUPERINTENDING ENGINEER (D) W.R. SHYAM BARNAI P. CIRCLE AMBIKAPUR (C.G.)	RECOMMENDED BY SUPERINTENDING ENGINEER (D) HASDEO GANGA BASIN AMBIKAPUR (C.G.)			
	APPROVED BY CHIEF ENGINEER HASDEO GANGA BASIN AMBIKAPUR (C.G.)				



SECOND FLOOR PLAN

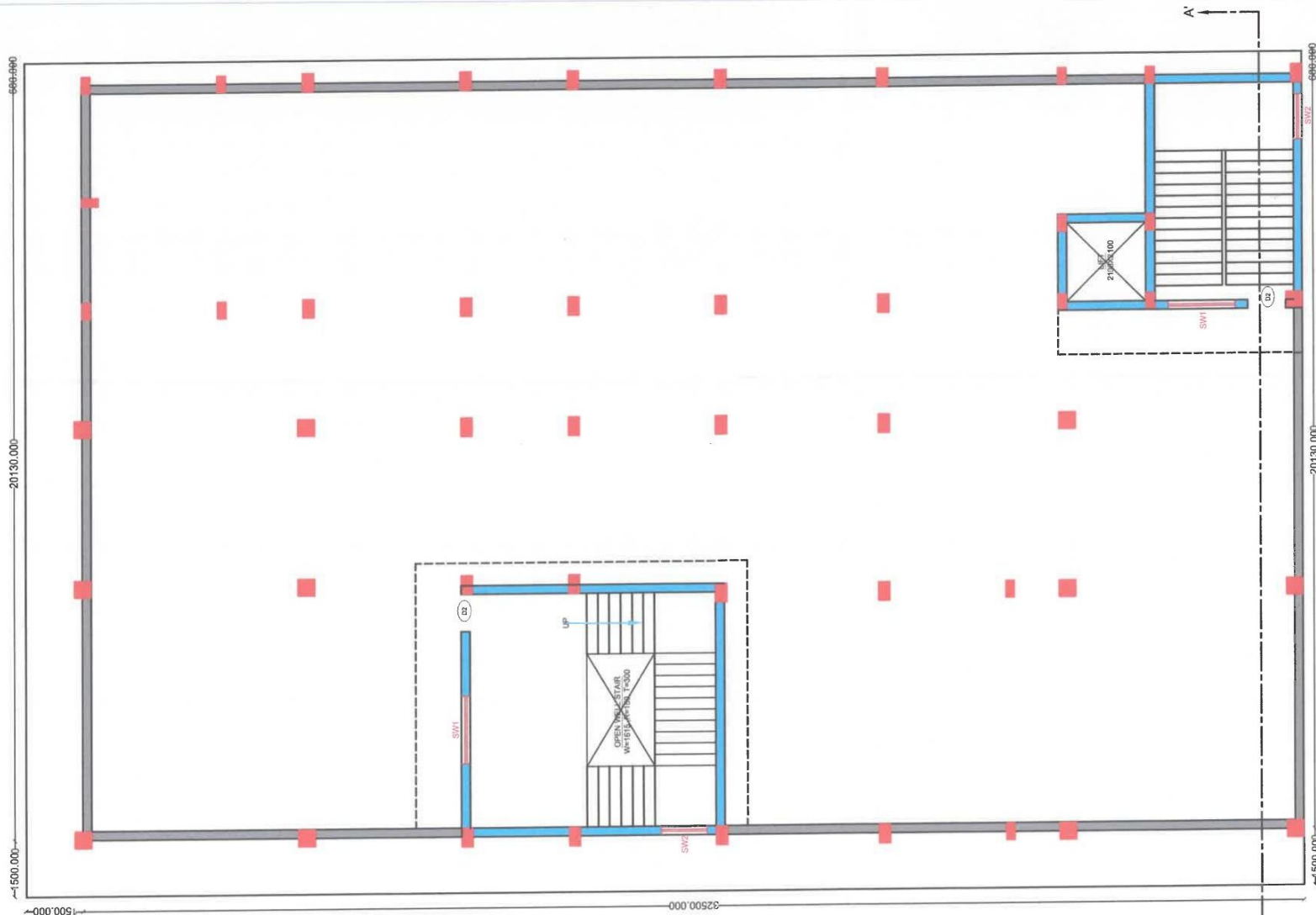
JOINERY DETAILS						
S.NO.	TYPE OF OPENING	NUMBER OF ITEMS	DESIGNATION	WIDTH	HEIGHT	SILL LEVEL
1	DOOR	2	MD	2100	2400	0
2	DOOR	3	D1	1200	2400	0
3	DOOR	18	D2	1000	2400	0
4	DOOR	6	D3	750	2400	0
5	WINDOW	22	SW1	1800	1500	900
6	WINDOW	5	SW2	1200	1500	900
7	VENTILATOR	29	V	600	450	2550

DRAWING NAME :-

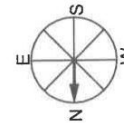
SECOND FLOOR PLAN
PLINTH AREA=654.14 SQM.
SLAB AREA=755.82 SQM.

SCALE :- 1:120

GOVERNMENT OF CHHATTISGARH, WATER RESOURCES DEPARTMENT WATER RESOURCES DIVISION NO. 01 AMBIKAPUR		
PREPARED BY SUB ENGINEER SHYAM CANAL SUB DIV NO. 01 AMBIKAPUR (C.G.)	CHECKED BY ASSISTANT ENGINEER (D) W.R. SHYAM BARUA P. CIRCLE AMBIKAPUR (C.G.)	CHECKED BY ASSISTANT ENGINEER (D) HASDEO GANGA BASIN AMBIKAPUR (C.G.)
CHECKED BY SUB DIVISIONAL OFFICER SHYAM CANAL SUB DIV NO. 01 AMBIKAPUR (C.G.)	CHECKED BY EXECUTIVE ENGINEER (D) W.R. SHYAM BARUA P. CIRCLE AMBIKAPUR (C.G.)	CHECKED BY EXECUTIVE ENGINEER (D) HASDEO GANGA BASIN AMBIKAPUR (C.G.)
CHECKED BY ASSISTANT ENGINEER (D) WATER RESOURCES DIVISION NO. 1 AMBIKAPUR (C.G.)	RECOMMENDED BY SUPERINTENDING ENGINEER (D) W.R. SHYAM BARUA P. CIRCLE AMBIKAPUR (C.G.)	RECOMMENDED BY SUPERINTENDING ENGINEER (D) HASDEO GANGA BASIN AMBIKAPUR (C.G.)
SUBMITTED BY EXECUTIVE ENGINEER WATER RESOURCES DIVISION NO. 1 AMBIKAPUR (C.G.)	APPROVED BY CHIEF ENGINEER HASDEO GANGA BASIN AMBIKAPUR (C.G.)	



TERRACE FLOOR PLAN



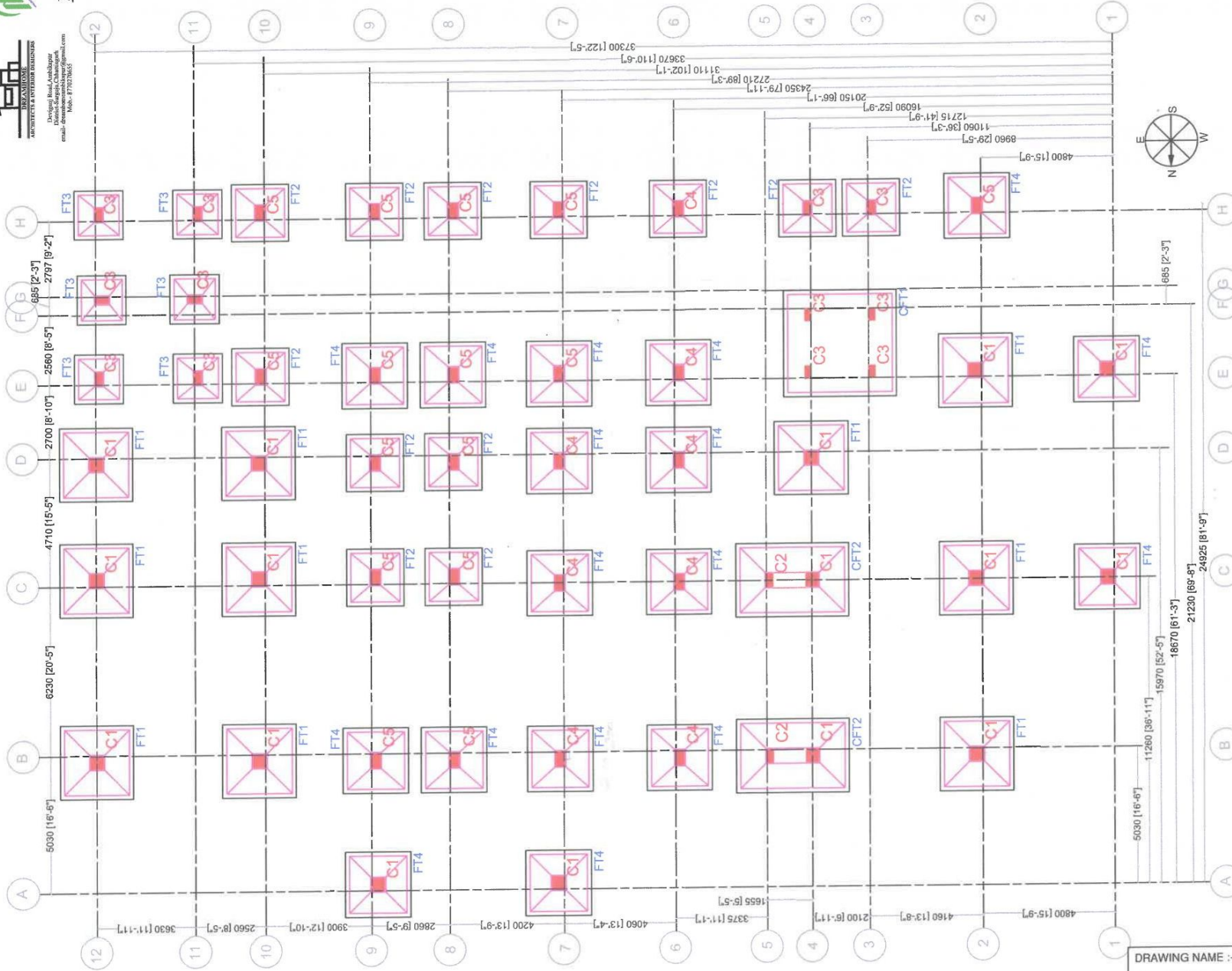
JOINERY DETAILS					
S.NO.	TYPE OF OPENING	NUMBER OF ITEMS	DESIGNATION	WIDTH	HEIGHT
1	DOOR	2	D1	1200	2400
2	WINDOW	2	SW1	1800	1500
3	WINDOW	2	SW2	1200	1500
4	VENTILATOR	4	V	600	450
					2550
					3000

DRAWING NAME :-

TERRACE FLOOR PLAN
PLINTH AREA=99.21 SQM.
SLAB AREA=118.43 SQM.

SCALE :- 1:120

GOVERNMENT OF CHHATTISGARH, WATER RESOURCES DEPARTMENT WATER RESOURCES DIVISION NO. 01 AMBIKAPUR		
RENOVATION WORK OF THE OFFICE OF EXECUTIVE ENGINEER WATER RESOURCES DIVISION NO. 1 AMBIKAPUR		
PREPARED BY SUB ENGINEER SHYAM CANAL SUB DIV NO. 01 AMBIKAPUR (C.G.)	CHECKED BY ASSISTANT ENGINEER (D) W.R. SHYAM BARNALI P. CIRCLE AMBIKAPUR (C.G.)	CHECKED BY ASSISTANT ENGINEER (D) HAZROD GANGA BASIN AMBIKAPUR (C.G.)
CHECKED BY SUB DIVISIONAL OFFICER SHYAM CANAL SUB DIV NO. 01 AMBIKAPUR (C.G.)	CHECKED BY EXECUTIVE ENGINEER (D) W.R. SHYAM BARNALI P. CIRCLE AMBIKAPUR (C.G.)	CHECKED BY EXECUTIVE ENGINEER (D) HAZROD GANGA BASIN AMBIKAPUR (C.G.)
CHECKED BY ASSISTANT ENGINEER (D) WATER RESOURCES DIVISION NO.1 AMBIKAPUR (C.G.)	RECOMMENDED BY ASSISTANT ENGINEER (D) WATER RESOURCES DIVISION NO.1 AMBIKAPUR (C.G.)	RECOMMENDED BY SUPERINTENDING ENGINEER (D) HAZROD GANGA BASIN AMBIKAPUR (C.G.)
SUBMITTED BY ASSISTANT ENGINEER WATER RESOURCES DIVISION NO.1 AMBIKAPUR (C.G.)	RECOMMENDED BY SUPERINTENDING ENGINEER W.R. SHYAM BARNALI P. CIRCLE AMBIKAPUR (C.G.)	APPROVED BY CHIEF ENGINEER HAZROD GANGA BASIN AMBIKAPUR (C.G.)



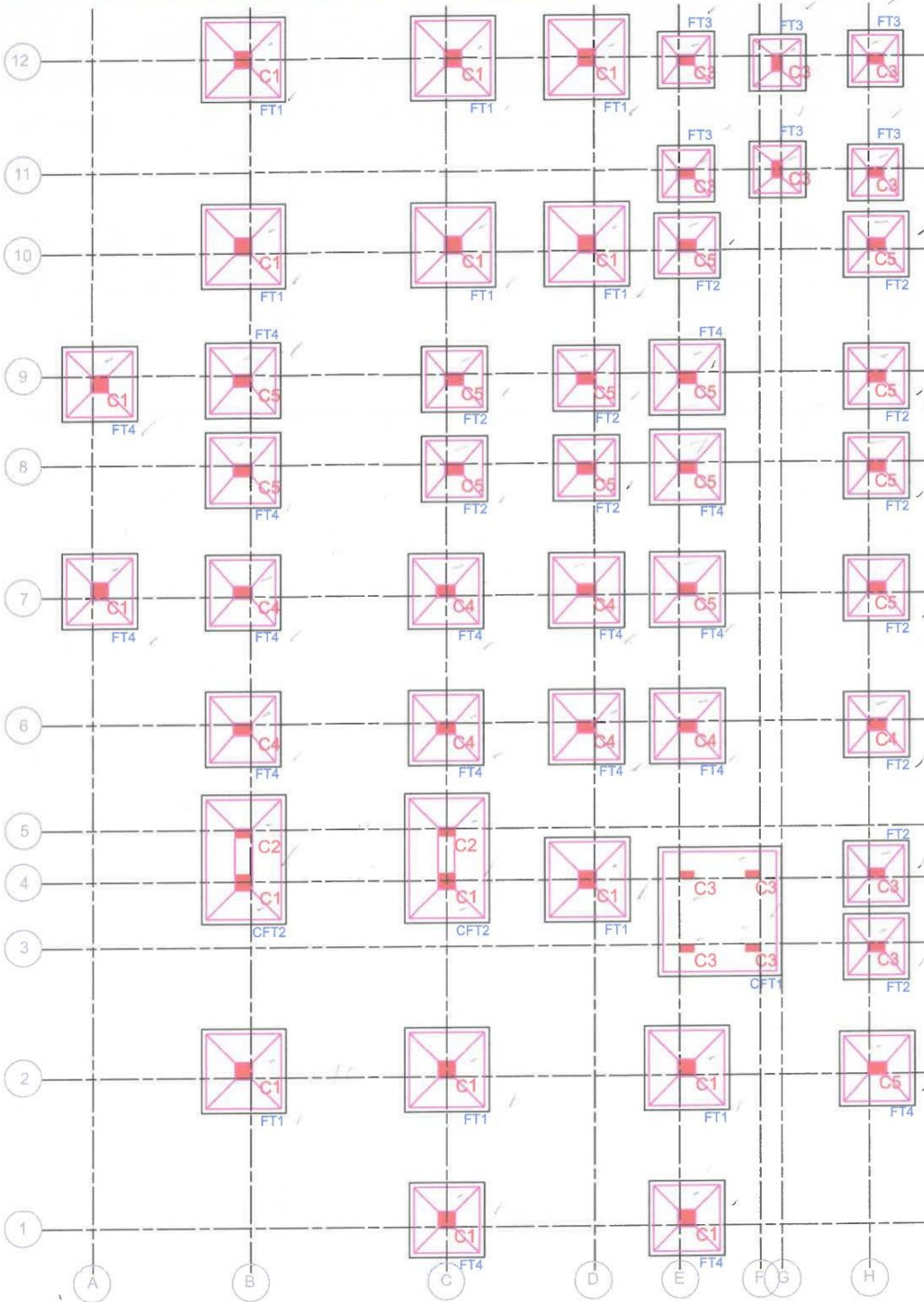
LAYOUT PLAN

SCHEDULE OF FOOTINGS					
S.NO.	TYPE OF FOOTING	NUMBER OF FOOTING	DEPTH OF EXCAVATION MM	EXCAVATION SIZE IN MM A X B	FOOTING SIZE IN MM a x b
1	FT1	10	2700	2700X2700	2400X2400
2	FT2	12	2700	2100X2100	1800X1800
3	FT3	06	2700	1800X1800	1500X1500
4	FT4	17	2700	2400X2400	2100X2100
5	CFT1	01	2700	4000X4200	3700X3900
6	CFT2	02	2700	2700X4200	2400X3900

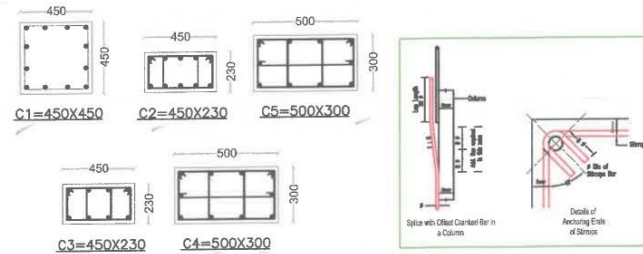
SCHEDULE OF COLUMNS				
S.NO.	TYPE OF COLUMN	NUMBER OF COLUMNS	SIZE OF COLUMN MM L X W	
1	C1	16	450x450	
2	C2	02	450x230	
3	C3	12	450x230	
4	C4	08	500x300	
5	C5	15	500x300	

GOVERNMENT OF CHHATTISGARH, WATER RESOURCES DEPARTMENT		
WATER RESOURCES DIVISION NO. 01 AMBIKAPUR		
RENOVATION WORK OF THE OFFICE OF EXECUTIVE ENGINEER WATER RESOURCES DIVISION NO. 1 AMBIKAPUR		
PREPARED BY SUB ENGINEER SHYAM CANAL, SUB DIV NO. 01 AMBIKAPUR (C.G.)	CHECKED BY ASSISTANT ENGINEER (D) W.R. SHYAM BARNAI P. CIRCLE AMBIKAPUR (C.G.)	CHECKED BY ASSISTANT ENGINEER (D) HASDEO GANGA BASIN AMBIKAPUR (C.G.)
CHECKED BY SUB DIVISIONAL OFFICER SHYAM CANAL, SUB DIV NO. 01 AMBIKAPUR (C.G.)	CHECKED BY EXECUTIVE ENGINEER (D) W.R. SHYAM BARNAI P. CIRCLE AMBIKAPUR (C.G.)	CHECKED BY EXECUTIVE ENGINEER (D) HASDEO GANGA BASIN AMBIKAPUR (C.G.)
CHECKED BY ASSISTANT ENGINEER (D) WATER RESOURCES DIVISION NO. 1 AMBIKAPUR (C.G.)	RECOMMENDED BY SUPERINTENDING ENGINEER (D) W.R. SHYAM BARNAI P. CIRCLE AMBIKAPUR (C.G.)	RECOMMENDED BY SUPERINTENDING ENGINEER (D) HASDEO GANGA BASIN AMBIKAPUR (C.G.)
SUBMITTED BY EXECUTIVE ENGINEER WATER RESOURCES DIVISION NO. 1 AMBIKAPUR (C.G.)	APPROVED BY CHIEF ENGINEER HASDEO GANGA BASIN AMBIKAPUR (C.G.)	

DRAWING NAME :-
LAYOUT PLAN
SCALE :- 1:150



SCHEDULE OF COLUMNS					
S.NO.	TYPE OF COLUMN	NUMBER OF COLUMNS	SIZE OF COLUMN MM L X W	STEEL MM X NOS.	STIRRUPS
1	C1	16	450x450	#16 MM X 12 NOS.	#8MM - 6 LEGGED @ 150 MM C/C
2	C2	02	450x230	#16 MM X 10 NOS.	#8MM - 4 LEGGED @ 150 MM C/C
3	C3	12	450x230	#12 MM X 08 NOS.	#8MM - 4 LEGGED @ 150 MM C/C
4	C4	08	500x300	#20 MM X 04 NOS. #16 MM X 06 NOS.	#8MM - 6 LEGGED @ 150 MM C/C
5	C5	15	500x300	#16 MM X 10 NOS.	#8MM - 6 LEGGED @ 150 MM C/C



NOTES

ALL DIMENSION ARE IN MM
USE THE BAR $F_y = 415$ CONFORMING TO IS-1786-1985
EXPOSURE CONDITION OF PROJECT LOCATION IS MILD, R.C. WORK SHALL BE IN CONCRETE MIX M-25. MINIMUM CEMENT CONTENT SHALL NOT BE LESS THAN 380 Kg/Cum & W/C RATIO SHOULD NOT EXCEED 0.50
R.C. WORK SHALL BE IN MIX M-10

COVER FOR

q) COLUMN HAVING (12 MM DIA AS MAIN STEEL)	25MM
COLUMN HAVING (MORE THAN 12 MM DIA AS MAIN STEEL)	40MM

FOOTINGS

BEAMS	50 MM	50 MM
SLABS	25 MM	25 MM

DEVELOPMENT LENGTH OF BARS

DIA OF BAR IN mm	#8MM	#10MM	#12MM	#16MM	#20MM
IN COMPRESSION	311	388	466	621	777
IN TENSION	388	485	621	777	971

DIA OF BAR IN mm

#8MM	#10MM	#12MM	#16MM	#20MM
388	485	621	777	971

THE STRUCTURAL DESIGN HAS BEEN DONE AS PER THE PROVISIONS OF IS-456-2000, IS 1893/2002 & IS 4326-1978.

DUCTILE DETAILS OF REINFORCEMENT IS PROVIDED AS PER IS 13920/1993

ALL 100mm/200mm BRICK/PARTITION WALLS SHALL BE CONSTRUCTED AS PER RED BOOK SPECIFICATIONS

ALL GUARD/PARAPET WALLS SHALL BE IN CONCRETE WITH VERTICAL BARS #8MM @150c/c AND DISTRIBUTION STEEL OF #8MM @ 200c/c

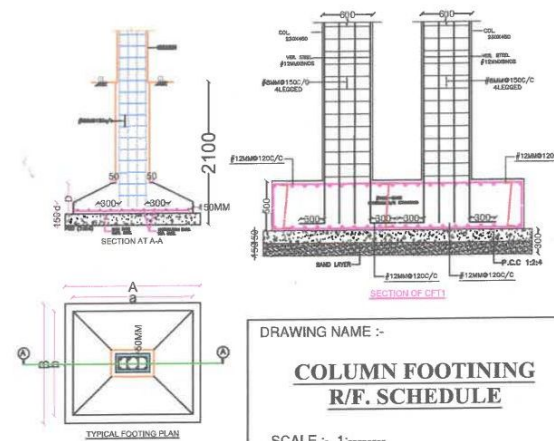
ALL EXTRA TOP BAR SHALL BE CARRIED UP TO A DISTANCE OF SPAN/4 IN TO ADJACENT SPAN.

IF TWO BEAMS HAVING DIFFERENT NO. OF OF BARS AS EXTRA TOP HAVE COMMON SUPPORT THEN THE GREATER OF TWO STEEL IS SHALL BE PROVIDED.

THIS DRAWING SHALL BE READ WITH ALONG WITH ARCHITECTURAL WORKING DRAWING.

IN CASE OF ANY OMISSIONS OR DOUBT, PLEASE CONSULT THE ARCHITECT / UNDERSIGNED.

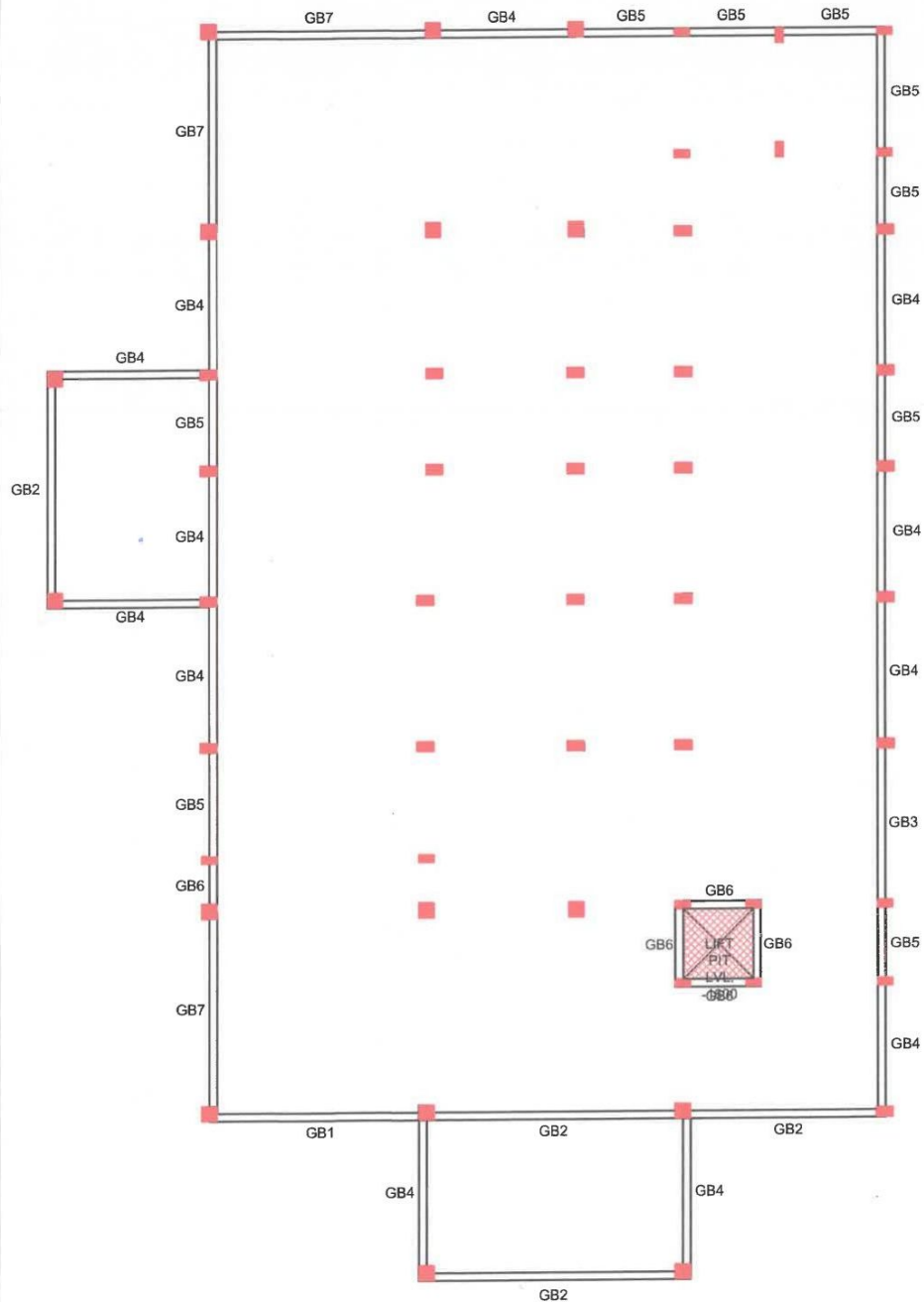
SCHEDULE OF FOOTINGS								
S.NO.	TYPE OF FOOTING	NUMBER OF FOOTING	DEPTH OF EXCAVATION MM	EXCAVATION SIZE IN MM A X B	FOOTING SIZE IN MM a X b	DEPTH 'D' IN MM	DEPTH 'd' IN MM	REINFORCEMENT IN JALI MM@SPACING
1	FT1	10	2700	2700X2700	2400X2400	650	300	#12MM @ 150 MM C/C BOTHWAYS
2	FT2	12	2700	2100X2100	1800X1800	600	250	#10MM @ 150 MM C/C BOTHWAYS
3	FT3	06	2700	1800X1800	1500X1500	500	200	#10MM @ 150 MM C/C BOTHWAYS
4	FT4	17	2700	2400X2400	2100X2100	600	250	#12MM @ 150 MM C/C BOTHWAYS
4	CFT1	01	2700	4000X4200	3700X3900	SQUARE FOOTING	500	#10MM @ 150 MM C/C BOTHWAYS DOUBLE MESH
4	CFT2	02	2700	2700X4200	2400X3900	600	250	#12MM @ 150 MM C/C BOTHWAYS



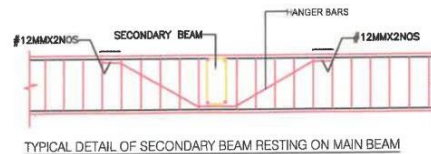
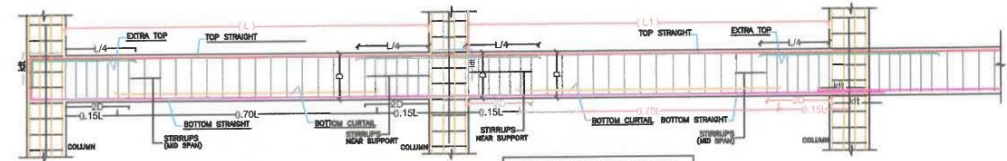
DRAWING NAME :-
**COLUMN FOOTING
R/F. SCHEDULE**

SCALE :- 1:-----

GOVERNMENT OF CHHATTISGARH, WATER RESOURCES DEPARTMENT WATER RESOURCES DIVISION NO. 01 AMBIKAPUR		
RENOVATION WORK OF THE OFFICE OF EXECUTIVE ENGINEER WATER RESOURCES DIVISION NO. 1 AMBIKAPUR		
PREPARED BY SUB ENGINEER SHYAM CANAL, SUB DIV NO. 01 AMBIKAPUR (C.G.)	CHECKED BY ASSISTANT ENGINEER (D) W.R. SHYAM BARNAI P. CIRCLE AMBIKAPUR (C.G.)	CHECKED BY ASSISTANT ENGINEER (D) HASDEO GANDGA BASIN AMBIKAPUR (C.G.)
CHECKED BY SUB ENGINEER SHYAM CANAL, SUB DIV NO. 01 AMBIKAPUR (C.G.)	CHECKED BY EXECUTIVE ENGINEER (D) W.R. SHYAM BARNAI P. CIRCLE AMBIKAPUR (C.G.)	CHECKED BY EXECUTIVE ENGINEER (D) HASDEO GANDGA BASIN AMBIKAPUR (C.G.)
CHECKED BY ASSISTANT ENGINEER (D) WATER RESOURCES DIVISION NO.1 AMBIKAPUR (C.G.)	RECOMMENDED BY SUPERINTENDING ENGINEER (D) W.R. SHYAM BARNAI P. CIRCLE AMBIKAPUR (C.G.)	RECOMMENDED BY SUPERINTENDING ENGINEER (D) HASDEO GANDGA BASIN AMBIKAPUR (C.G.)
SUBMITTED BY EXECUTIVE ENGINEER WATER RESOURCES DIVISION NO.1 AMBIKAPUR (C.G.)	APPROVED BY SUPERINTENDING ENGINEER W.R. SHYAM BARNAI P. CIRCLE AMBIKAPUR (C.G.)	APPROVED BY CHIEF ENGINEER HASDEO GANDGA BASIN AMBIKAPUR (C.G.)



SCHEDULE OF GROUND BEAMS									
S.NO.	BEAM CODE	BEAM SIZE (MM)	BOTTOM STRAIGHT (MMXNOS.)	BOTTOM CURTAILED D (MMXNOS.)	TOP STRAIGHT (MMXNOS.)	EXTRA TOP AT SUPPORTS LENGTH L/4 (MMXNOS.)	LENGTH OF CURTAILED D BAR	STIRRUPS SPACING (MM)	
								AT SUPPORT	MID SPAN
1.	GB1	230X450	#20X2	#20X2	#20X2	#20X2	0.7 L	#8MM @125 MM C/C	#8MM @150 MM C/C
2.	GB2	230X450	#16X2	#20X2	#16X2	#20X2	0.7 L	#8MM @100 MM C/C	#8MM @125 MM C/C
3.	GB3	230X450	#12X2	#16X2	#12X2	#16X2	0.7 L	#8MM @100 MM C/C	#8MM @125 MM C/C
4.	GB4	230X450	#12X2	#12X2	#12X2	#12X2	0.7 L	#8MM @100 MM C/C	#8MM @125 MM C/C
5.	GB5	230X450	#12X2	#12X1	#12X2	#12X1	0.7 L	#8MM @100 MM C/C	#8MM @125 MM C/C
6.	GB6	230X450	#12X2	-	#12X2	-	-	#8MM @100 MM C/C	#8MM @125 MM C/C
7.	GB7	230X450	#16X2	#16X2	#16X2	#16X2	0.7 L	#8MM @100 MM C/C	#8MM @125 MM C/C
8.	GB8	230X450	#12X2	#12X1	#12X2	#12X1	0.7 L	#8MM @100 MM C/C	#8MM @125 MM C/C



NOTES

ALL DIMENSION ARE IN MM

USE TMT BARS Fe - 415 CONFORMING TO IS-1786-1985

EXPOSURE CONDITION OF PROJECT LOCATION IS MILD. R.C.C. WORK SHALL BE IN CONCRETE MIX M-25. MINIMUM CEMENT CONTENT SHALL NOT BE LESS THAN 300 Kg/Cum & W/C RATIO SHOULD NOT EXCEED 0.50

P.C.C. WORK SHALL BE IN MIX M-10

COVER FOR

	SIDE
1) COLUMN HAVING (12 MM DIA AS MAIN STEEL)	25MM
COLUMN HAVING (MORE THAN 12 MM DIA AS MAIN STEEL)	40MM
FOOTINGS	50/ 50 MM
BEAMS	25 MM 25 MM
SLABS	20 MM 25 MM

DEVELOPMENT LENGTH OF BARS

DIA OF BAR IN mm	#8MM	#10MM	#12MM	#16MM	#20MM
IN COMPRESSION	311	368	466	621	777
IN TENSION	388	485	583	777	971

DIA OF BAR IN mm #8MM #10MM #12MM #16MM #20MM
[L_d] IN mm

THE STRUCTURAL DESIGN HAS BEEN DONE AS PER THE PROVISIONS OF IS-456-2000, IS 1893/2002 & IS 4326-1975.

DUCTILE DETAILS OF REINFORCEMENT IS PROVIDED AS PER IS 13820/1993

ALL 100mm/200mm BRICK/PARTITION WALLS SHALL BE CONSTRUCTED AS PER RED BOOK SPECIFICATIONS

ALL GUARD/HARPET WALLS SHALL BE IN CONCRETE WITH VERTICAL BARS #8MM @150c/c AND DISTRIBUTION STEEL OF #8MM @ 200c/c

ALL EXTRA TOP BAR SHALL BE CARRIED UP TO A DISTANCE OF SPAN/4 IN TO ADJACENT SPAN.

IF TWO BEAMS HAVING DIFFERENT NO. OF OF BARS AS EXTRA TOP HAVE COMMON SUPPORT THEN THE GREATER OF TWO STEELS SHALL BE PROVIDED.

THIS DRAWING SHALL BE READ WITH ALONG WITH ARCHITECTURAL WORKING DRAWING.

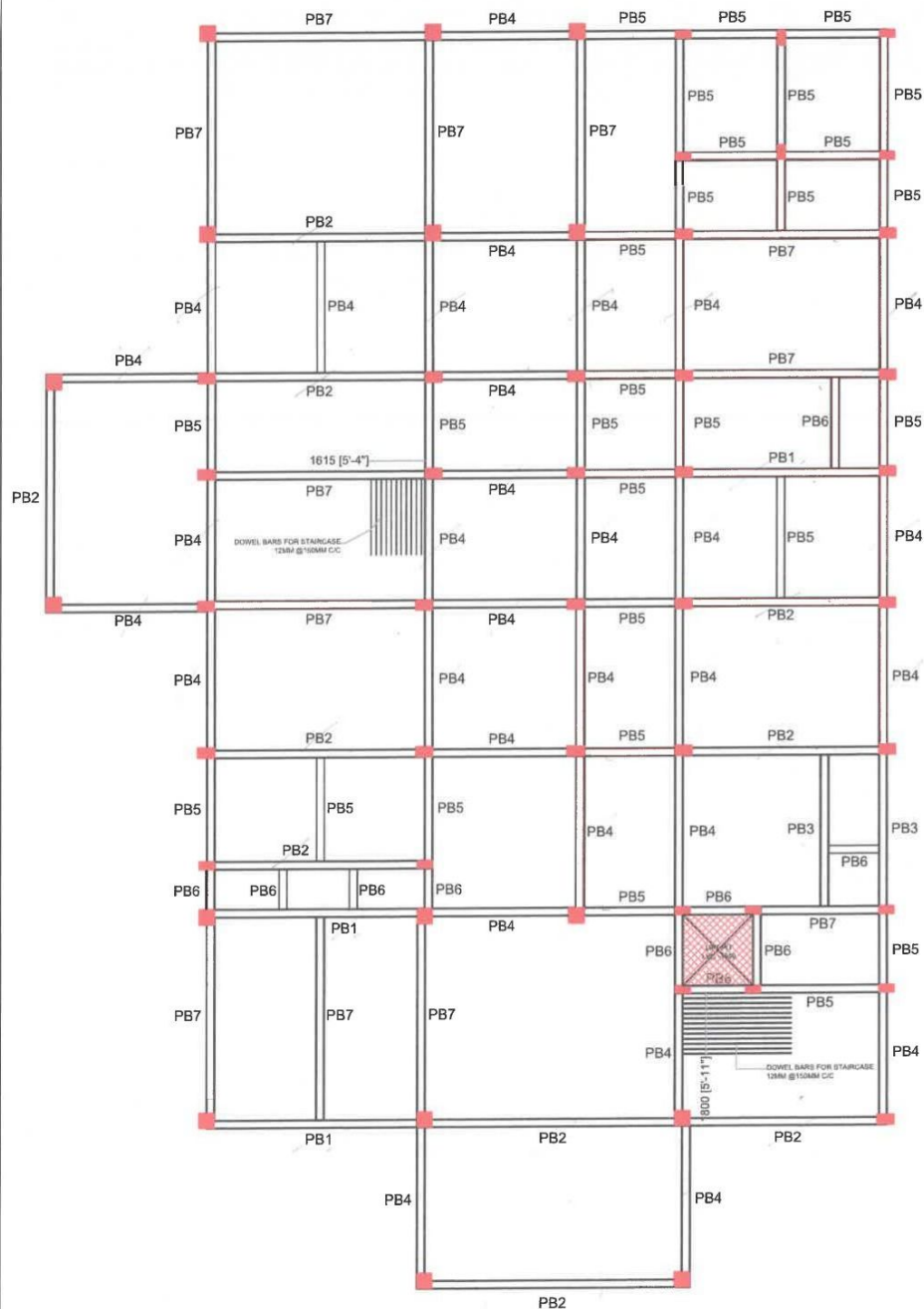
IN CASE OF ANY OMISSIONS OR DOUBT, PLEASE CONSULT THE ARCHITECT / UNDERSIGNED.

GOVERNMENT OF CHHATTISGARH, WATER RESOURCES DEPARTMENT		
WATER RESOURCES DIVISION NO. 01 AMBIKAPUR		
RENOVATION WORK OF THE OFFICE OF EXECUTIVE ENGINEER		
WATER RESOURCES DIVISION NO. 1 AMBIKAPUR		
PREPARED BY SUB ENGINEER SHYAM KANAL SUB DIV NO. 01 AMBIKAPUR (C.G.)	CHECKED BY ASSISTANT ENGINEER (D) W.R. SHYAM KANAL P. CIRCLE AMBIKAPUR (C.G.)	CHECKED BY ASSISTANT ENGINEER (D) HASDEO GANGA BASIN AMBIKAPUR (C.G.)
CHECKED BY SUB DIVISIONAL ENGINEER SHYAM KANAL SUB DIV NO. 01 AMBIKAPUR (C.G.)	CHECKED BY EXECUTIVE ENGINEER (D) W.R. SHYAM KANAL P. CIRCLE AMBIKAPUR (C.G.)	CHECKED BY EXECUTIVE ENGINEER (D) HASDEO GANGA BASIN AMBIKAPUR (C.G.)
CHECKED BY ASSISTANT ENGINEER (D) WATER RESOURCES DIVISION NO.1 AMBIKAPUR (C.G.)	RECOMMENDED BY SUPERINTENDING ENGINEER (D) HASDEO GANGA BASIN AMBIKAPUR (C.G.)	RECOMMENDED BY SUPERINTENDING ENGINEER (D) HASDEO GANGA BASIN AMBIKAPUR (C.G.)
SUBMITTED BY EXECUTIVE ENGINEER WATER RESOURCES DIVISION NO.1 AMBIKAPUR (C.G.)	RECOMMENDED BY SUPERINTENDING ENGINEER W.R. SHYAM KANAL P. CIRCLE AMBIKAPUR (C.G.)	APPROVED BY CHIEF ENGINEER HASDEO GANGA BASIN AMBIKAPUR (C.G.)

DRAWING NAME :-

GROUND BEAM DETAILS

SCALE :- 1:-----



SCHEDULE OF PLINTH BEAMS									
S.NO.	BEAM CODE	BEAM SIZE (MM)	BOTTOM STRAIGHT (MMXNOS.)	BOTTOM CURTAILED (MMXNOS.)	TOP STRAIGHT (MMXNOS.)	EXTRA TOP AT SUPPORTS LENGTH L/4 (MMXNOS.)	LENGTH OF CURTAILED BAR	STIRRUPS SPACING (MM)	
								AT SUPPORT	MID SPAN
1.	PB1	230X450	#20X2	#20X2	#20X2	#20X2	0.7 L	#8MM @125 MM C/C	#8MM @150 MM C/C
2.	PB2	230X450	#16X2	#20X2	#16X2	#20X2	0.7 L	#8MM @100 MM C/C	#8MM @125 MM C/C
3.	PB3	230X450	#12X2	#16X2	#12X2	#16X2	0.7 L	#8MM @100 MM C/C	#8MM @125 MM C/C
4.	PB4	230X450	#12X2	#12X2	#12X2	#12X2	0.7 L	#8MM @100 MM C/C	#8MM @125 MM C/C
5.	PB5	230X450	#12X2	#12X1	#12X2	#12X1	0.7 L	#8MM @100 MM C/C	#8MM @125 MM C/C
6.	PB6	230X450	#12X2	-	#12X2	-	-	#8MM @100 MM C/C	#8MM @125 MM C/C
7.	PB7	230X450	#16X2	#16X2	#16X2	#16X2	0.7 L	#8MM @100 MM C/C	#8MM @125 MM C/C
8.	PB8	230X450	#12X2	#12X1	#12X2	#12X1	0.7 L	#8MM @100 MM C/C	#8MM @125 MM C/C

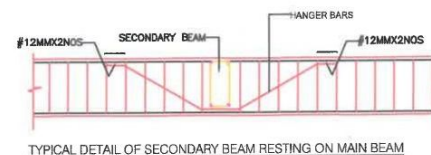
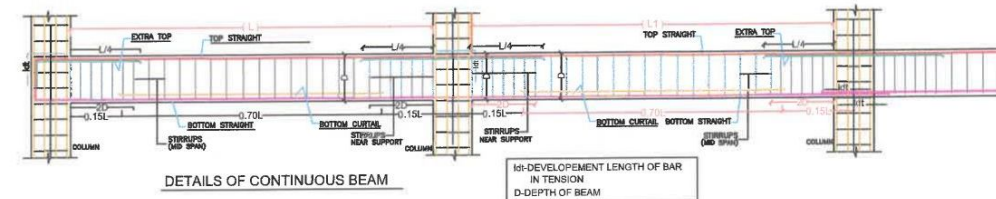
NOTES

ALL DIMENSION ARE IN MM
USE TMT BARS, Fe - 415 CONFORMING TO IS-1786-1985
EXPOSURE CONDITION OF PROJECT LOCATION IS MILD. R.C.C. WORK SHALL BE IN CONCRETE MIX M-25, MINIMUM CEMENT CONTENT SHALL NOT BE LESS THAN 300 Kg/Cum & W/C RATIO SHOULD NOT EXCEED 0.50
P.C.C. WORK SHALL BE IN MIX M-10

COVER FOR
a) COLUMN HAVING (12 MM DIA AS MAIN STEEL) 25MM
COLUMN HAVING (MORE THAN 12 MM DIA AS MAIN STEEL) 40MM
FOOTINGS 50 MM 50 MM
BEAMS 25 MM 25 MM
SLABS 20 MM 25 MM

DEVELOPMENT LENGTH OF BARS
DIA OF BAR IN mm #8MM #10MM #12MM #16MM #20MM
IN TENSION 311 368 468 621 777
[Ld] IN mm
DIA OF BAR IN mm #8MM #10MM #12MM #16MM #20MM
IN TENSION 368 468 563 777 971
[Ld] IN mm

THE STRUCTURAL DESIGN HAS BEEN DONE AS PER THE PROVISIONS OF IS-456-2000, IS 1893/2002 & IS 4326-1978.
DUCTILE DETAILS OF REINFORCEMENT IS PROVIDED AS PER IS 13920/1993
ALL 100mm/200mm BRICK/PARTITION WALLS SHALL BE CONSTRUCTED AS PER RED BOOK SPECIFICATIONS
ALL GUARD/PARAPET WALLS SHALL BE IN CONCRETE WITH VERTICAL BARS #8MM @150c/c AND DISTRIBUTION STEEL OF #8MM @ 200c/c
ALL EXTRA TOP BAR SHALL BE CARRIED UP TO A DISTANCE OF SPAN/4 IN TO ADJACENT SPAN.
IF TWO BEAMS HAVING DIFFERENT NO. OF BARS AS EXTRA TOP HAVE COMMON SUPPORT THEN THE GREATER OF TWO STEELS SHALL BE PROVIDED.
THIS DRAWING SHALL BE READ WITH ALONG WITH ARCHITECTURAL WORKING DRAWING.
IN CASE OF ANY OMISSIONS OR DOUBT, PLEASE CONSULT THE ARCHITECT / UNDERSIGNED.

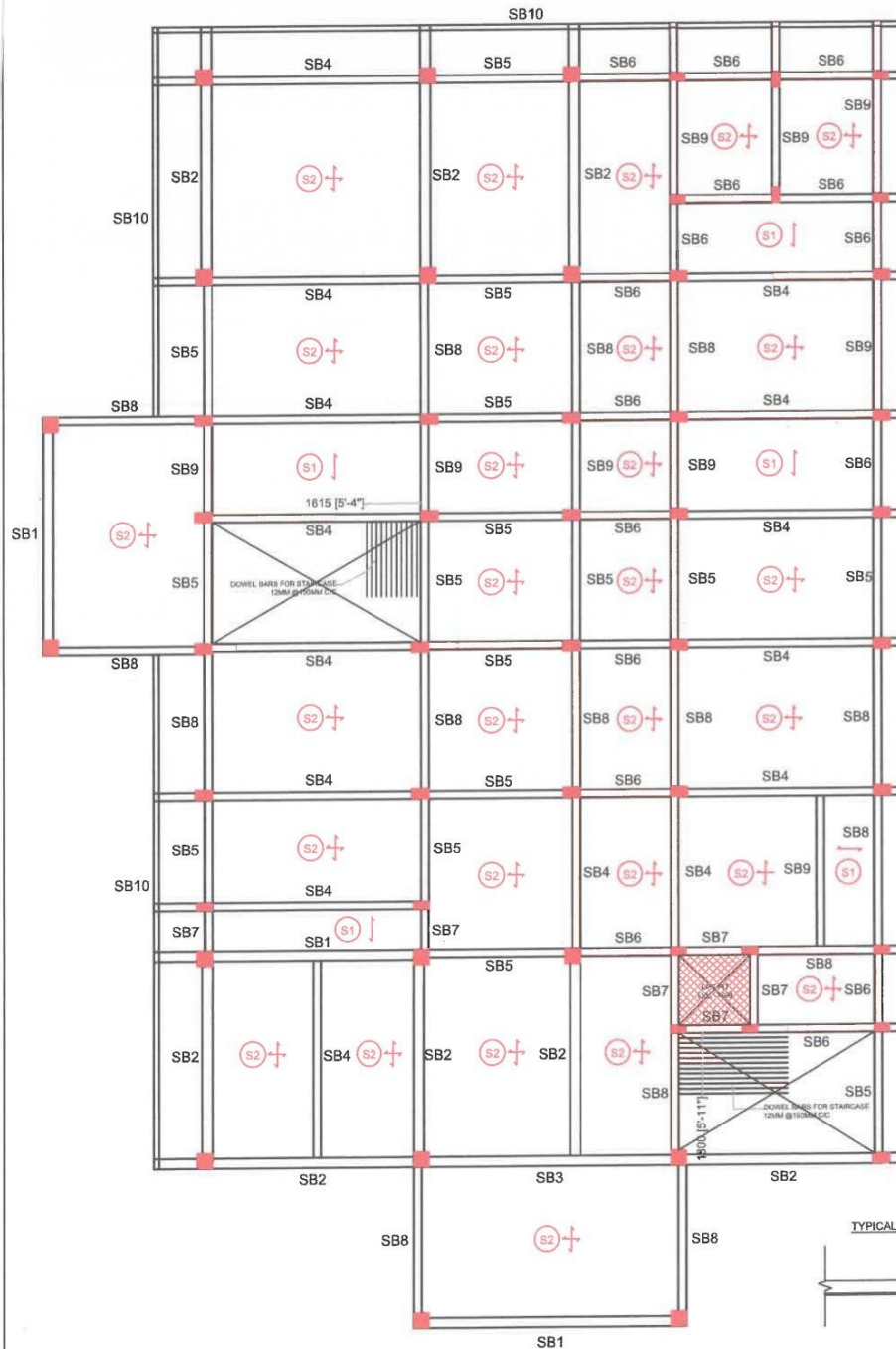


DRAWING NAME :-

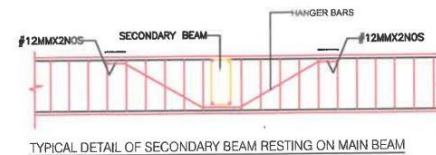
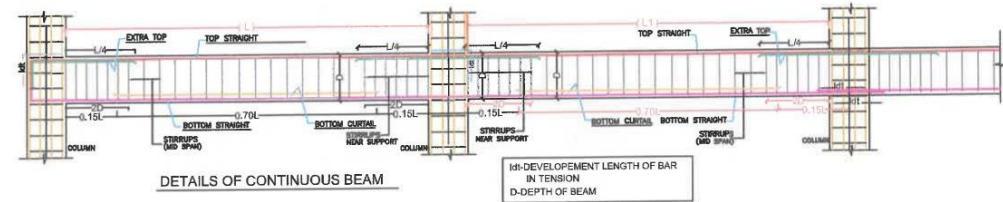
PLINTH BEAM DETAILS

SCALE :- 1:-----

GOVERNMENT OF CHHATTISGARH, WATER RESOURCES DEPARTMENT WATER RESOURCES DIVISION NO. 01 AMBIKAPUR		
RENOVATION WORK OF THE OFFICE OF EXECUTIVE ENGINEER WATER RESOURCES DIVISION NO. 1 AMBIKAPUR		
PREPARED BY SUB ENGINEER SHYAM CANAL, SUB DIV NO. 01 AMBIKAPUR (C.G.)	CHECKED BY ASSISTANT ENGINEER (D) W.R. SHYAM BARNAI P. CIRCLE AMBIKAPUR (C.G.)	CHECKED BY ASSISTANT ENGINEER (D) HASDEO GANGA BASIN AMBIKAPUR (C.G.)
CHECKED BY SUB DIVISIONAL OFFICER SHYAM CANAL, SUB DIV NO. 01 AMBIKAPUR (C.G.)	CHECKED BY EXECUTIVE ENGINEER (D) W.R. SHYAM BARNAI P. CIRCLE AMBIKAPUR (C.G.)	CHECKED BY EXECUTIVE ENGINEER (D) HASDEO GANGA BASIN AMBIKAPUR (C.G.)
CHECKED BY ASSISTANT ENGINEER (D) WATER RESOURCES DIVISION NO.1 AMBIKAPUR (C.G.)	RECOMMENDED BY SUPERINTENDING ENGINEER (D) W.R. SHYAM BARNAI P. CIRCLE AMBIKAPUR (C.G.)	RECOMMENDED BY SUPERINTENDING ENGINEER (D) HASDEO GANGA BASIN AMBIKAPUR (C.G.)
SUBMITTED BY EXECUTIVE ENGINEER WATER RESOURCES DIVISION NO.1 AMBIKAPUR (C.G.)	APPROVED BY CHIEF ENGINEER HASDEO GANGA BASIN AMBIKAPUR (C.G.)	APPROVED BY CHIEF ENGINEER HASDEO GANGA BASIN AMBIKAPUR (C.G.)



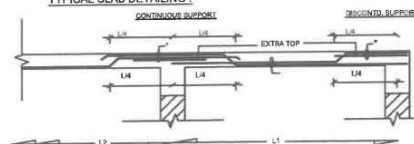
SCHEDULE OF SLAB BEAMS									
S.NO.	BEAM CODE	BEAM SIZE (MM)	BOTTOM STRAIGHT (MMXNOS.)	BOTTOM CURTAILED (MMXNOS.)	TOP STRAIGHT (MMXNOS.)	EXTRA TOP AT SUPPORTS LENGTH L/4 (MMXNOS.)	LENGTH OF CURTAILED BAR	STIRRUPS SPACING (MM)	
								AT SUPPORT	MID SPAN
1.	SB1	300X500	#20X2	#20X2	#20X2	#20X2	0.7 L	#8MM @125 MM C/C	#8MM @150 MM C/C
2.	SB2	300X600	#20X3	#16X2	#12X3	#20X3 + #16X3	0.7 L	#8MM @100 MM C/C	#8MM @125 MM C/C
3.	SB3	300X600	#20X3	#16X2	#12X3	#20X4 + #16X2	0.7 L	#8MM @100 MM C/C	#8MM @125 MM C/C
4.	SB4	230X500	#20X2	#20X2	#20X2	#20X2	0.7 L	#8MM @100 MM C/C	#8MM @125 MM C/C
5.	SB5	230X500	#12X2	#16X2	#12X2	#16X2	0.7 L	#8MM @100 MM C/C	#8MM @125 MM C/C
6.	SB6	230X500	#12X2	#12X1	#12X2	#12X1	0.7 L	#8MM @100 MM C/C	#8MM @125 MM C/C
7.	SB7	230X500	#12X2	-	#12X2	-	-	#8MM @100 MM C/C	#8MM @125 MM C/C
8.	SB8	230X500	#16X2	#16X2	#16X2	#16X2	0.7 L	#8MM @100 MM C/C	#8MM @125 MM C/C
9.	SB9	230X500	#12X2	#12X2	#12X2	#12X2	0.7 L	#8MM @100 MM C/C	#8MM @125 MM C/C
10.	SB10	150X600	#12X2	-	#12X2	-	-	#8MM @100 MM C/C	#8MM @125 MM C/C



SCHEDULE OF SLABS :

SLAB NOS.	THICK.	MAIN SPAN STEEL	OTHER SPAN STEEL
S2	150	100 @ 150 C/C ALT. BENTUP 100 @ 300 C/C EXTRA TOP	100 @ 150 C/C ALT. BENTUP 100 @ 300 C/C EXTRA TOP
S1	150	100 @ 150 C/C ALT. BENTUP 100 @ 300 C/C EXTRA TOP	100 @ 150 C/C

TYPICAL SLAB DETAILING :



DRAWING NAME :-

**GROUND FLOOR SLAB
BEAM DETAILS**

SCALE :- 1:-----

NOTES

ALL DIMENSION ARE IN MM
USE TMT BARS/Fe - 415 CONFORMING TO IS-1786-1985
EXPOSURE CONDITION OF PROJECT LOCATION IS MILD, R C WORK SHALL BE IN CONCRETE MIX M-25, MINIMUM CEMENT CONTENT SHALL NOT BE LESS THAN 300 kg/cum & W/C RATIO SHOULD NOT EXCEED 0.50
P C C WORK SHALL BE IN MIX M-10

COVER FOR SIDE
a) COLUMN HAVING (12 MM DIA AS MAIN STEEL) 25MM
COLUMN HAVING (MORE THAN 12 MM DIA AS MAIN STEEL) 40MM
FOOTINGS 50 MM 50 MM
BEAMS 25 MM 25 MM
SLABS 20 MM 25 MM

DEVELOPMENT LENGTH OF BARS
DIA OF BAR IN mm #8MM #10MM #12MM #16MM #20MM
IN COMPRESSION 311 388 468 621 777
IN TENSION 368 455 563 777 971

THE STRUCTURAL DESIGN HAS BEEN DONE AS PER THE PROVISIONS OF IS-456-2000, IS 1893/2002 & IS 4326-1978.

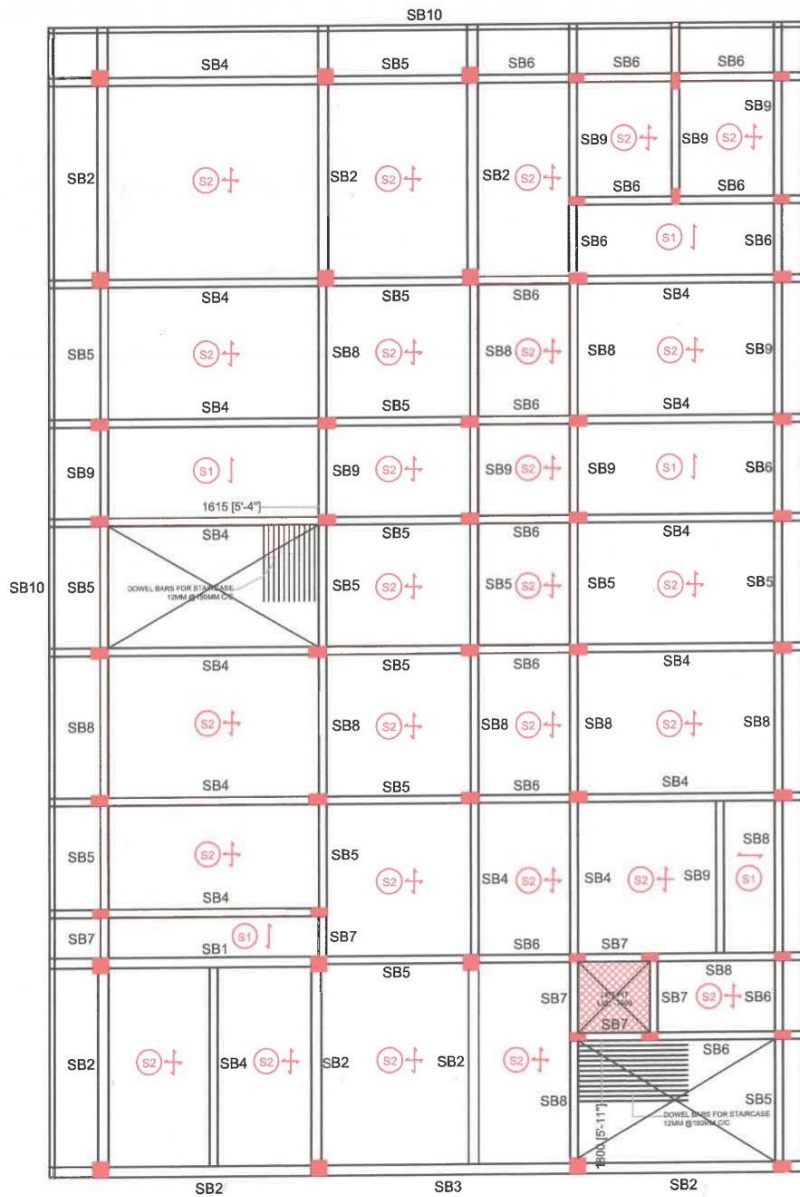
DUCTILE DETAILS OF REINFORCEMENT IS PROVIDED AS PER IS 13920/1993
ALL 100mm/200mm BRICK/PARTITION WALLS SHALL BE CONSTRUCTED AS PER RED BOOK SPECIFICATIONS

ALL GUARD/PARAPET WALLS SHALL BE IN CONCRETE WITH VERTICAL BARS #8MM @150c/c AND DISTRIBUTION STEEL OF #8MM @ 200c/c
ALL EXTRA TOP BAR SHALL BE CARRIED UP TO A DISTANCE OF SPAN/4 IN TO ADJACENT SPAN.

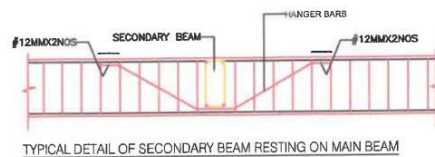
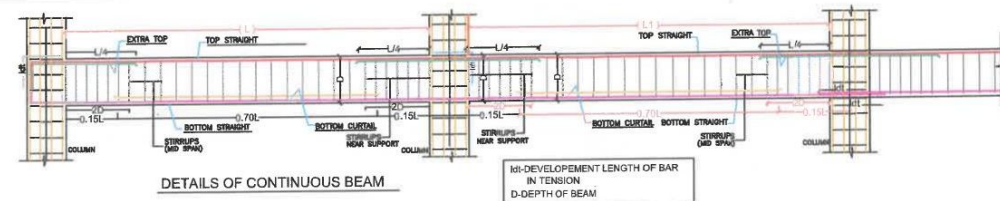
IF TWO BEAMS HAVING DIFFERENT NO. OF BARS AS EXTRA TOP HAVE COMMON SUPPORT THEN THE GREATER OF TWO STEELS SHALL BE PROVIDED.

THIS DRAWING SHALL BE READ WITH ALONG WITH ARCHITECTURAL WORKING DRAWING.
IN CASE OF ANY OMISSIONS OR DOUBT, PLEASE CONSULT THE ARCHITECT / UNDERSIGNED.

GOVERNMENT OF CHHATTISGARH, WATER RESOURCES DEPARTMENT WATER RESOURCES DIVISION NO. 01 AMBIKAPUR			
RENOVATION WORK OF THE OFFICE OF EXECUTIVE ENGINEER WATER RESOURCES DIVISION NO. 1 AMBIKAPUR			
PREPARED BY SUB ENGINEER SHYAM CANAN, SUB DIV NO. 01 AMBIKAPUR (C.G.)	CHECKED BY ASSISTANT ENGINEER (D) W.R. SHYAM BARNAI P. CIRCLE AMBIKAPUR (C.G.)	CHECKED BY ASSISTANT ENGINEER (D) HAZDEO GANGA BASIN AMBIKAPUR (C.G.)	
CHECKED BY SUB DIVISIONAL OFFICER SHYAM CHITRAL, SUB DIV NO. 01 AMBIKAPUR (C.G.)	CHECKED BY EXECUTIVE ENGINEER (D) W.R. SHYAM BARNAI P. CIRCLE AMBIKAPUR (C.G.)	CHECKED BY EXECUTIVE ENGINEER (D) HAZDEO GANGA BASIN AMBIKAPUR (C.G.)	
CHECKED BY ASSISTANT ENGINEER (D) WATER RESOURCES DIVISION NO.1 AMBIKAPUR (C.G.)	CHECKED BY SUPERINTENDING ENGINEER (D) W.R. SHYAM BARNAI P. CIRCLE AMBIKAPUR (C.G.)	CHECKED BY SUPERINTENDING ENGINEER (D) HAZDEO GANGA BASIN AMBIKAPUR (C.G.)	
SUBMITTED BY EXECUTIVE ENGINEER WATER RESOURCES DIVISION NO.1 AMBIKAPUR (C.G.)	CHECKED BY SUPERINTENDING ENGINEER W.R. SHYAM BARNAI P. CIRCLE AMBIKAPUR (C.G.)	CHECKED BY CHIEF ENGINEER HAZDEO GANGA BASIN AMBIKAPUR (C.G.)	



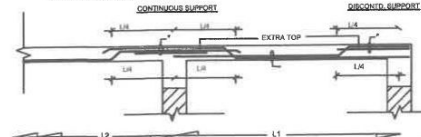
S.NO.	BEAM CODE	BEAM SIZE (MM)	BOTTOM STRAIGHT (MMXNOS.)	BOTTOM CURTAILED (MMXNOS.)	TOP STRAIGHT (MMXNOS.)	EXTRA TOP AT SUPPORTS LENGTH L/4 (MMXNOS.)	LENGTH OF CURTAILED BAR	STIRRUPS SPACING (MM)	
								AT SUPPORT	MID SPAN
1.	SB1	300X500	#20X2	#20X2	#20X2	#20X2	0.7 L	#8MM @125 MM C/C	#8MM @150 MM C/C
2.	SB2	300X600	#20X3	#16X2	#12X3	#20X3 + #16X3 + #20X4 + #16X2	0.7 L	#8MM @100 MM C/C	#8MM @125 MM C/C
3.	SB3	300X600	#20X3	#16X2	#12X3	#20X3 + #16X2	0.7 L	#8MM @100 MM C/C	#8MM @125 MM C/C
4.	SB4	230X500	#20X2	#20X2	#20X2	#20X2	0.7 L	#8MM @100 MM C/C	#8MM @125 MM C/C
5.	SB5	230X500	#12X2	#16X2	#12X2	#16X2	0.7 L	#8MM @100 MM C/C	#8MM @125 MM C/C
6.	SB6	230X500	#12X2	#12X1	#12X2	#12X1	0.7 L	#8MM @100 MM C/C	#8MM @125 MM C/C
7.	SB7	230X500	#12X2	-	#12X2	-	-	#8MM @100 MM C/C	#8MM @125 MM C/C
8.	SB8	230X500	#16X2	#16X2	#16X2	#16X2	0.7 L	#8MM @100 MM C/C	#8MM @125 MM C/C
9.	SB9	230X500	#12X2	#12X2	#12X2	#12X2	0.7 L	#8MM @100 MM C/C	#8MM @125 MM C/C
10.	SB10	150X600	#12X2	-	#12X2	-	-	#8MM @100 MM C/C	#8MM @125 MM C/C



SCHEDULE OF SLABS :

SLAB NOS.	THICK.	MAIN SPAN STEEL	OTHER SPAN STEEL
S2	150	100 @ 150 C/C ALT. BENTUP 100 @ 300 C/C EXTRA TOP	100 @ 150 C/C ALT. BENTUP 100 @ 300 C/C EXTRA TOP
S1	150	100 @ 150 C/C ALT. BENTUP 100 @ 300 C/C EXTRA TOP	100 @ 150 C/C

TYPICAL SLAB DETAILING :



DRAWING NAME :-

**FIRST & SECOND FLOOR
SLAB BEAM DETAILS**

SCALE :- 1:-----

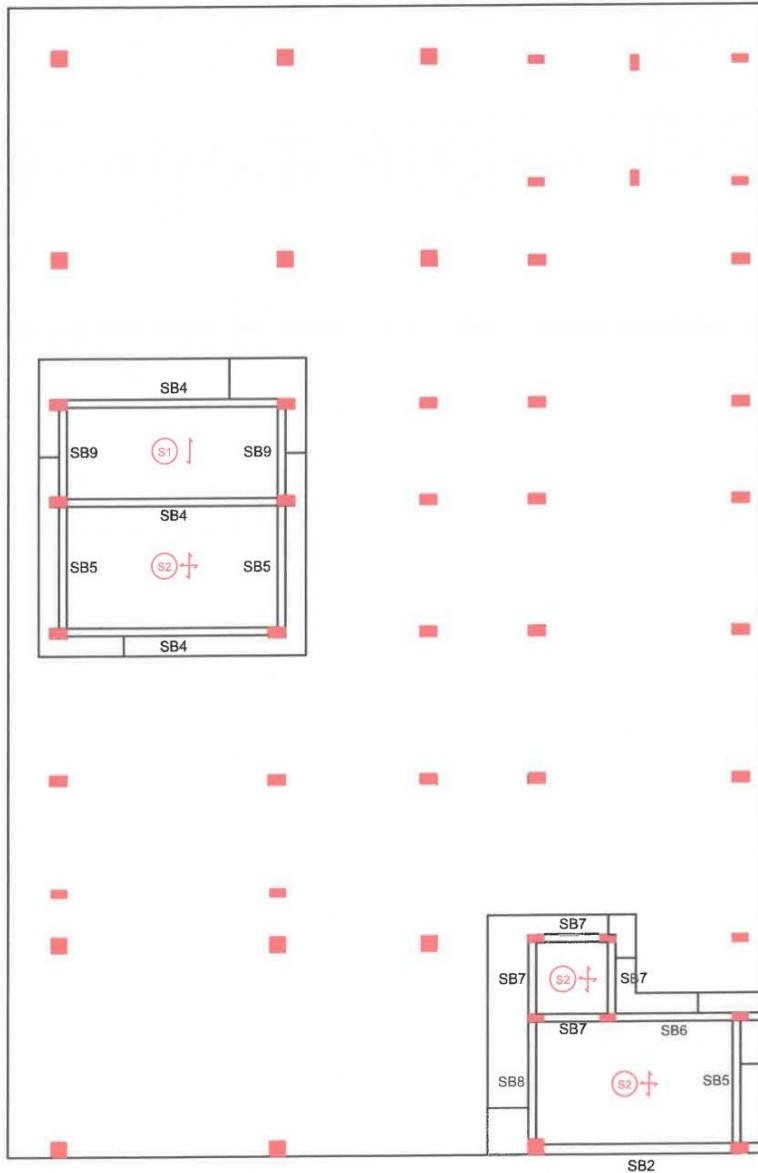
NOTES
ALL DIMENSION ARE IN MM
USE TMT BARS, Fe - 415 CONFORMING TO IS-1786-1985
EXPOSURE CONDITION OF PROJECT LOCATION IS MILD, P C & WORK SHALL BE IN CONCRETE
MIX M-25, MINIMUM CEMENT CONTENT SHALL NOT BE LESS THAN 300 Kg/Cum & W/C RATIO SHOULD NOT EXCEED 0.50
P C C WORK SHALL BE IN MIX M-10

COVER FOR SIDE 25MM
o) COLUMN HAVING (12 MM DIA AS MAIN STEEL) 40MM
COLUMN HAVING (MORE THAN 12 MM DIA AS MAIN STEEL) 25MM
FOOTINGS 50 MM 50 MM
BEAMS 25 MM 25 MM
SLABS 20 MM 25 MM

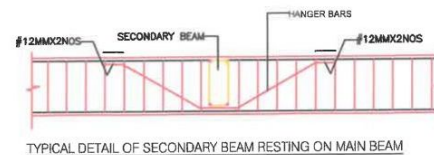
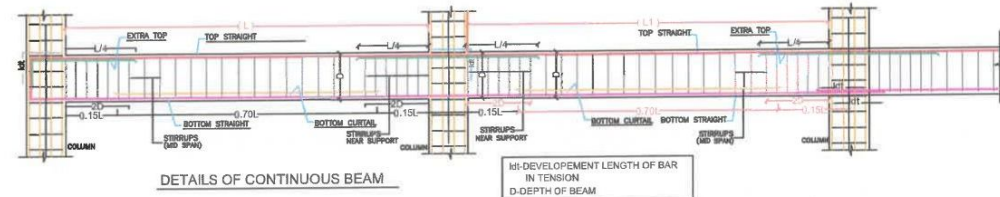
DEVELOPMENT LENGTH OF BARS
DIA OF BAR IN mm #8MM #10MM #12MM #16MM #20MM
IN COMPRESSION 311 388 466 621 777
[L_{dc}] IN mm
DIA OF BAR IN mm #8MM #10MM #12MM #16MM #20MM
IN TENSION 388 485 583 777 971
[L_{dt}] IN mm

THE STRUCTURAL DESIGN HAS BEEN DONE AS PER THE PROVISIONS OF IS-456-2000, IS 1893/2002 & S 4326-1978.
DUCTILE DETAILS OF REINFORCEMENT IS PROVIDED AS PER IS 13920/1993
ALL 100mm/200mm BRICK/PARTITION WALLS SHALL BE CONSTRUCTED AS PER RED BOOK SPECIFICATIONS
ALL GUARD/PARAPET WALLS SHALL BE IN CONCRETE WITH VERTICAL BARS #8MM @150c/c AND DISTRIBUTION STEEL OF #8MM @ 200c/c
ALL EXTRA TOP BAR SHALL BE CARRIED UP TO A DISTANCE OF SPAN/4 IN TO ADJACENT SPAN.
IF TWO BEAMS HAVING DIFFERENT NO. OF BARS AS EXTRA TOP HAVE COMMON SUPPORT THEN THE GREATER OF TWO STEELS SHALL BE PROVIDED.
THIS DRAWING SHALL BE READ WITH ALONG WITH ARCHITECTURAL WORKING DRAWING.
IN CASE OF ANY OMISSIONS OR DOUBT, PLEASE CONSULT THE ARCHITECT / UNDERSIGNED.

GOVERNMENT OF CHHATTISGARH, WATER RESOURCES DEPARTMENT WATER RESOURCES DIVISION NO. 01 AMBIKAPUR		
RENOVATION WORK OF THE OFFICE OF EXECUTIVE ENGINEER WATER RESOURCES DIVISION NO. 1 AMBIKAPUR		
PREPARED BY SUB ENGINEER SHYAM KANAI SUB DIV NO. 01 AMBIKAPUR (C.G.) CHECKED BY SUB DIVISIONAL OFFICER SHYAM KANAI SUB DIV NO. 01 AMBIKAPUR (C.G.)	CHECKED BY ASSISTANT ENGINEER (D) W.R. SHYAM BARNAL P. CIRCLE AMBIKAPUR (C.G.) CHECKED BY EXECUTIVE ENGINEER (D) W.R. SHYAM BARNAL P. CIRCLE AMBIKAPUR (C.G.) RECOMMENDED BY EXECUTIVE ENGINEER (D) W.R. SHYAM BARNAL P. CIRCLE AMBIKAPUR (C.G.)	CHECKED BY ASSISTANT ENGINEER (D) HARDEO GANGA BASIN AMBIKAPUR (C.G.) CHECKED BY EXECUTIVE ENGINEER (D) HARDEO GANGA BASIN AMBIKAPUR (C.G.) RECOMMENDED BY SUPERINTENDING ENGINEER (D) HARDEO GANGA BASIN AMBIKAPUR (C.G.) APPROVED BY CHIEF ENGINEER HARDEO GANGA BASIN AMBIKAPUR (C.G.)
SUBMITTED BY SUB ENGINEER WATER RESOURCES DIVISION NO.1 AMBIKAPUR (C.G.)	RECOMMENDED BY SUPERINTENDING ENGINEER W.R. SHYAM BARNAL P. CIRCLE AMBIKAPUR (C.G.)	

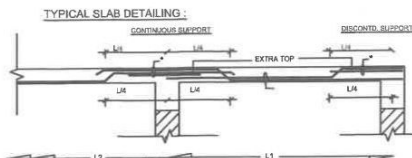


SCHEDULE OF SLAB BEAMS									
S.NO.	BEAM CODE	BEAM SIZE (MM)	BOTTOM STRAIGHT (MMXNOS.)	BOTTOM CURTAILED (MMXNOS.)	TOP STRAIGHT (MMXNOS.)	EXTRA TOP AT SUPPORTS LENGTH L/4 (MMXNOS.)	LENGTH OF CURTAILED BAR	STIRRUPS SPACING (MM)	
								AT SUPPORT	MID SPAN
1.	SB2	300X600	#20X3	#16X2	#12X3	#20X3 + #16X3	0.7 L	#8MM @100 MM C/C	#8MM @125 MM C/C
2.	SB4	230X500	#20X2	#20X2	#20X2	#20X2	0.7 L	#8MM @100 MM C/C	#8MM @125 MM C/C
3.	SB5	230X500	#12X2	#16X2	#12X2	#16X2	0.7 L	#8MM @100 MM C/C	#8MM @125 MM C/C
4.	SB6	230X500	#12X2	#12X1	#12X2	#12X1	0.7 L	#8MM @100 MM C/C	#8MM @125 MM C/C
5.	SB7	230X500	#12X2	-	#12X2	-	-	#8MM @100 MM C/C	#8MM @125 MM C/C
6.	SB8	230X500	#16X2	#16X2	#16X2	#16X2	0.7 L	#8MM @100 MM C/C	#8MM @125 MM C/C
7.	SB9	230X500	#12X2	#12X2	#12X2	#12X2	0.7 L	#8MM @100 MM C/C	#8MM @125 MM C/C



SCHEDULE OF SLABS :

SLAB NOS.	THICK.	MAIN SPAN STEEL	OTHER SPAN STEEL
S2	150	100 @ 150 C/C ALT. BENTUP 100 @ 300 C/C EXTRA TOP	100 @ 150 C/C ALT. BENTUP 100 @ 300 C/C EXTRA TOP
S1	150	100 @ 150 C/C ALT. BENTUP 100 @ 300 C/C EXTRA TOP	100 @ 150 C/C



DRAWING NAME :-

**TERRACE FLOOR SLAB
BEAM DETAILS**

SCALE :- 1:-----

NOTES

ALL DIMENSION ARE IN MM
USE TMT BARS, Fe - 415 CONFORMING TO IS-1786-1985
EXPOSURE CONDITION OF PROJECT LOCATION IS MILD. R C WORK SHALL BE IN CONCRETE MIX M-25, MINIMUM CEMENT CONTENT SHALL NOT BE LESS THAN 300 Kg/Cum & W/C RATIO SHOULD NOT EXCEED 0.50
P C C WORK SHALL BE IN MIX M-10

COVER FOR SIDE
d) COLUMN HAVING (12 MM DIA AS MAIN STEEL) 25MM
COLUMN HAVING (MORE THAN 12 MM DIA AS MAIN STEEL) 40MM
FOOTINGS 50 MM 50 MM
BEAMS 25 MM 25 MM
SLABS 20 MM 25 MM

DEVELOPMENT LENGTH OF BARS
DIA OF BAR IN mm #8MM #10MM #12MM #16MM #20MM
IN COMPRESSION 311 368 466 621 777
[Ld] IN mm
DIA OF BAR IN mm #8MM #10MM #12MM #16MM #20MM
IN TENSION 366 485 563 777 971
[Ld] IN mm

THE STRUCTURAL DESIGN HAS BEEN DONE AS PER THE PROVISIONS OF IS-456-2000, IS 1893/2002 & IS 4326-1978.

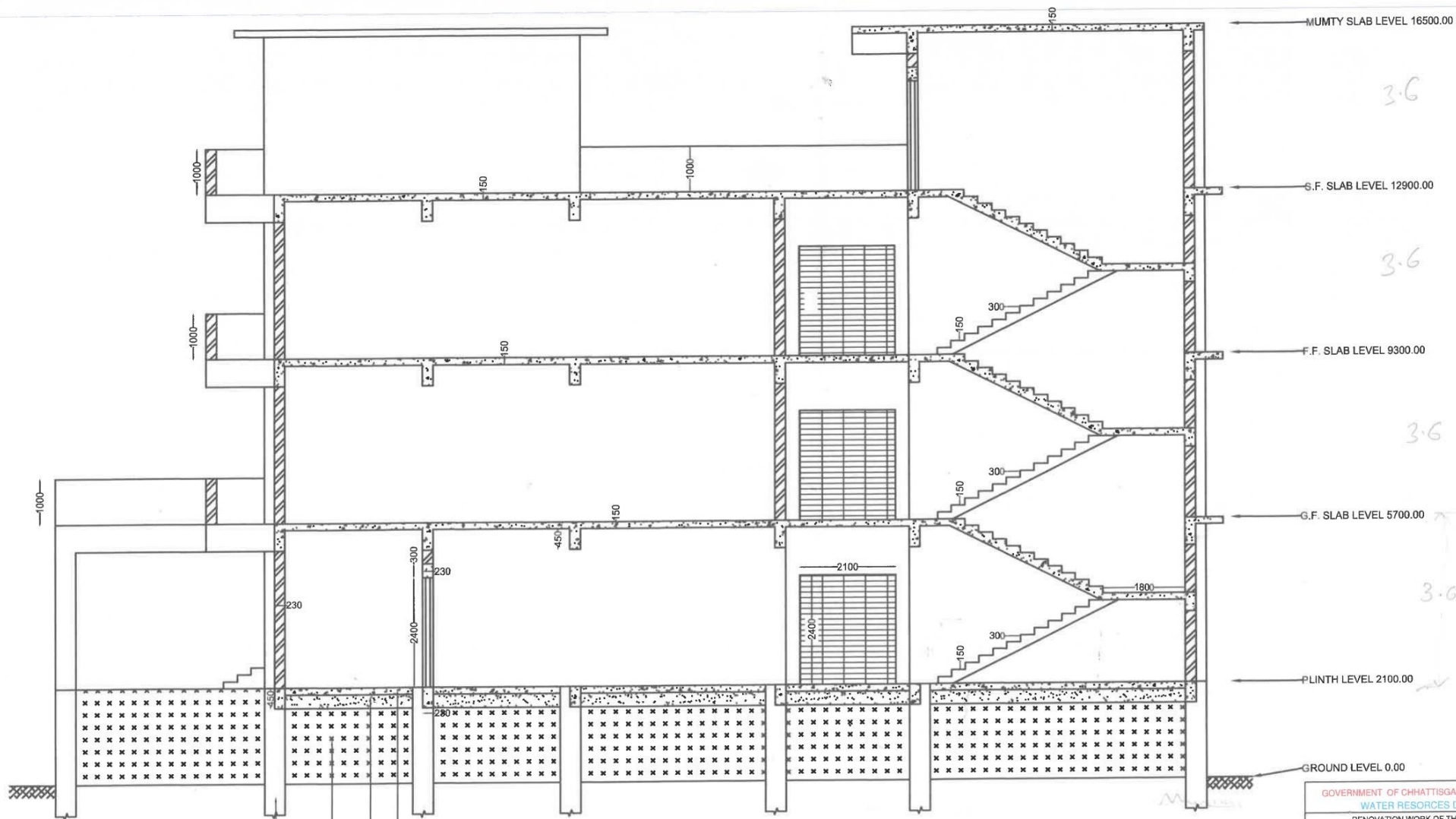
DUCTILE DETAILS OF REINFORCEMENT IS PROVIDED AS PER IS 13920/1993
ALL 100mm/200mm BRICK/PARTITION WALLS SHALL BE CONSTRUCTED AS PER RED BOOK SPECIFICATIONS

ALL GUARD/PARAPET WALLS SHALL BE IN CONCRETE WITH VERTICAL BARS #8MM @150c/c AND DISTRIBUTION STEEL OF #8MM @ 200c/c
ALL EXTRA TOP BAR SHALL BE CARRIED UP TO A DISTANCE OF SPAN/4 IN TO ADJACENT SPAN.

IF TWO BEAMS HAVING DIFFERENT NO. OF OF BARS AS EXTRA TOP HAVE COMMON SUPPORT THEN THE GREATER OF TWO STEELS SHALL BE PROVIDED.

THIS DRAWING SHALL BE READ WITH ALONG WITH ARCHITECTURAL WORKING DRAWING.
IN CASE OF ANY OMISSIONS OR DOUBT, PLEASE CONSULT THE ARCHITECT / UNDERSIGNED.

GOVERNMENT OF CHHATTISGARH, WATER RESOURCES DEPARTMENT WATER RESOURCES DIVISION NO. 01 AMBIKAPUR RENOVATION WORK OF THE OFFICE OF EXECUTIVE ENGINEER WATER RESOURCES DIVISION NO. 1 AMBIKAPUR			
PREPARED BY SUB ENGINEER SHYAM CANAL SUB DIV NO. 01 AMBIKAPUR (C.G.)	CHECKED BY ASSISTANT ENGINEER (D) W.R. SHYAM BARNAI P. CIRCLE AMBIKAPUR (C.G.)	CHECKED BY ASSISTANT ENGINEER (D) HADEO GANGA BASIN AMBIKAPUR (C.G.)	
CHECKED BY SUB DIVISIONAL OFFICER SHYAM CANAL SUB DIV NO. 01 AMBIKAPUR (C.G.)	CHECKED BY EXECUTIVE ENGINEER (D) W.R. SHYAM BARNAI P. CIRCLE AMBIKAPUR (C.G.)	CHECKED BY EXECUTIVE ENGINEER (D) HADEO GANGA BASIN AMBIKAPUR (C.G.)	
CHECKED BY ASSISTANT ENGINEER (D) WATER RESOURCES DIVISION NO.1 AMBIKAPUR (C.G.)	RECOMMENDED BY EXECUTIVE ENGINEER (D) W.R. SHYAM BARNAI P. CIRCLE AMBIKAPUR (C.G.)	RECOMMENDED BY SUPERINTENDING ENGINEER (D) HADEO GANGA BASIN AMBIKAPUR (C.G.)	
SUBMITTED BY EXECUTIVE ENGINEER WATER RESOURCES DIVISION NO.1 AMBIKAPUR (C.G.)	RECOMMENDED BY EXECUTIVE ENGINEER (D) W.R. SHYAM BARNAI P. CIRCLE AMBIKAPUR (C.G.)	APPROVED BY CHIEF ENGINEER HADEO GANGA BASIN AMBIKAPUR (C.G.)	



P.C.C. 150 MM M-10 1:3:6
 SAND FILLING 300 MM
 SOIL FILLING 1650 MM
 FOUNDATION AS PER SOIL CONDITION

DRAWING NAME :-

SECTION AT A-A'

SCALE :- 1:-----

GOVERNMENT OF CHHATTISGARH, WATER RESOURCES DEPARTMENT WATER RESOURCES DIVISION NO. 01 AMBIKAPUR RENOVATION WORK OF THE OFFICE OF EXECUTIVE ENGINEER WATER RESOURCES DIVISION NO. 1 AMBIKAPUR		
PREPARED BY SUB ENGINEER SHYAM CANAL SUB DIV NO. 01 AMBIKAPUR (C.G.)	CHECKED BY ASSISTANT ENGINEER (D) W.R. SHYAM BANNA P. CIRCLE AMBIKAPUR (C.G.)	CHECKED BY ASSISTANT ENGINEER (D) HASEDO GANGA BASIN AMBIKAPUR (C.G.)
CHECKED BY SUB ENGINEER SHYAM CANAL SUB DIV NO. 01 AMBIKAPUR (C.G.)	CHECKED BY ASSISTANT ENGINEER (D) W.R. SHYAM BANNA P. CIRCLE AMBIKAPUR (C.G.)	CHECKED BY EXECUTIVE ENGINEER (D) HASEDO GANGA BASIN AMBIKAPUR (C.G.)
CHECKED BY ASSISTANT ENGINEER (D) WATER RESOURCES DIVISION NO. 1 AMBIKAPUR (C.G.)	CHECKED BY EXECUTIVE ENGINEER (D) W.R. SHYAM BANNA P. CIRCLE AMBIKAPUR (C.G.)	CHECKED BY SUPERINTENDING ENGINEER (D) HASEDO GANGA BASIN AMBIKAPUR (C.G.)
SUBMITTED BY EXECUTIVE ENGINEER WATER RESOURCES DIVISION NO. 1 AMBIKAPUR (C.G.)	SUBMITTED BY SUPERINTENDING ENGINEER W.R. SHYAM BANNA P. CIRCLE AMBIKAPUR (C.G.)	SUBMITTED BY CHIEF ENGINEER HASEDO GANGA BASIN AMBIKAPUR (C.G.)

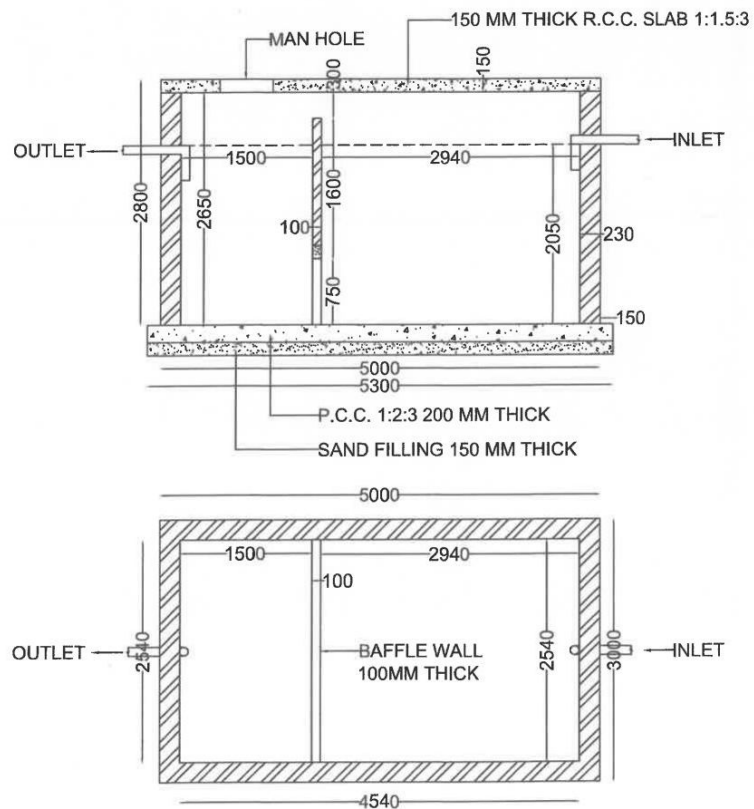


DRAWING NAME :-

FRONT ELEVATION

SCALE :- 1:-----

GOVERNMENT OF CHHATTISGARH, WATER RESOURCES DEPARTMENT		
WATER RESOURCES DIVISION NO. 01 AMBIKAPUR		
RENOVATION WORK OF THE OFFICE OF EXECUTIVE ENGINEER		
WATER RESOURCES DIVISION NO. 1 AMBIKAPUR		
PREPARED BY SUB ENGINEER SHYAM CANAL, SUB DIV NO. 01 AMBIKAPUR (C.G.)	CHECKED BY ASSISTANT ENGINEER (D) W.R. SHYAM CANAL P. CIRCLE AMBIKAPUR (C.G.)	CHECKED BY ASSISTANT ENGINEER (D) HAJDEO GANGA BASIN AMBIKAPUR (C.G.)
CHECKED BY SUB ENGINEER SHYAM CANAL, SUB DIV NO. 01 AMBIKAPUR (C.G.)	CHECKED BY ASSISTANT ENGINEER (D) W.R. SHYAM CANAL P. CIRCLE AMBIKAPUR (C.G.)	CHECKED BY EXECUTIVE ENGINEER (D) HAJDEO GANGA BASIN AMBIKAPUR (C.G.)
CHECKED BY ASSISTANT ENGINEER (D) WATER RESOURCES DIVISION NO.1 AMBIKAPUR (C.G.)	CHECKED BY EXECUTIVE ENGINEER (D) W.R. SHYAM CANAL P. CIRCLE AMBIKAPUR (C.G.)	RECOMMENDED BY SUPERINTENDING ENGINEER (D) HAJDEO GANGA BASIN AMBIKAPUR (C.G.)
SUBMITTED BY EXECUTIVE ENGINEER WATER RESOURCES DIVISION NO.1 AMBIKAPUR (C.G.)	RECOMMENDED BY SUPERINTENDING ENGINEER W.R. SHYAM CANAL P. CIRCLE AMBIKAPUR (C.G.)	APPROVED BY CHIEF ENGINEER HAJDEO GANGA BASIN AMBIKAPUR (C.G.)

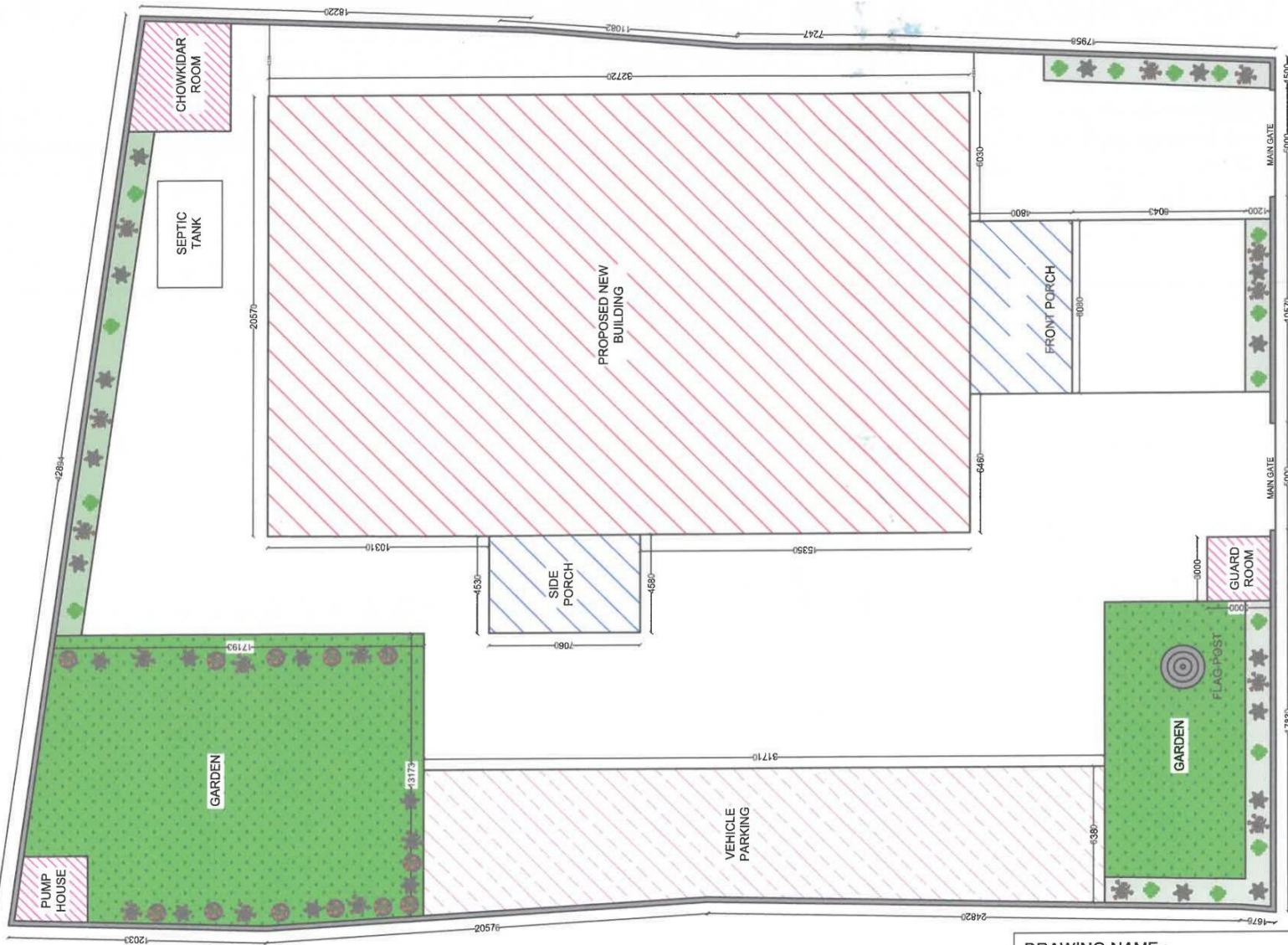


DRAWING NAME :-

SEPTIC TANK DETAILS

SCALE :- 1:-----



GOVERNMENT OF CHHATTISGARH, WATER RESOURCES DEPARTMENT		
WATER RESOURCES DIVISION NO. 01 AMBIKAPUR		
RENOVATION WORK OF THE OFFICE OF EXECUTIVE ENGINEER WATER RESOURCES DIVISION NO. 1 AMBIKAPUR		
PREPARED BY  SUB ENGINEER SHYAM CANAL SUB DIV NO. 01 AMBIKAPUR (C.G.)	CHECKED BY  ASSISTANT ENGINEER (D) W.R. SHYAM BARNAI P. CIRCLE AMBIKAPUR (C.G.)	CHECKED BY  ASSISTANT ENGINEER (D) HASDEO GANGA BASIN AMBIKAPUR (C.G.)
CHECKED BY  SUB DIVISIONAL OFFICER SHYAM CANAL SUB DIV NO. 01 AMBIKAPUR (C.G.)	CHECKED BY  EXECUTIVE ENGINEER (D) W.R. SHYAM BARNAI P. CIRCLE AMBIKAPUR (C.G.)	CHECKED BY  EXECUTIVE ENGINEER (D) HASDEO GANGA BASIN AMBIKAPUR (C.G.)
CHECKED BY  ASSISTANT ENGINEER (D) WATER RESOURCES DIVISION NO.1 AMBIKAPUR (C.G.)	RECOMMENDED BY  EXECUTIVE ENGINEER (D) W.R. SHYAM BARNAI P. CIRCLE AMBIKAPUR (C.G.)	RECOMMENDED BY  SUPERINTENDING ENGINEER (D) HASDEO GANGA BASIN AMBIKAPUR (C.G.)
SUBMITTED BY  EXECUTIVE ENGINEER WATER RESOURCES DIVISION NO.1 AMBIKAPUR (C.G.)	APPROVED BY  SUPERINTENDING ENGINEER W.R. SHYAM BARNAI P. CIRCLE AMBIKAPUR (C.G.)	APPROVED BY  CHIEF ENGINEER HASDEO GANGA BASIN AMBIKAPUR (C.G.)



DRAWING NAME :-

KEY PLAN

SCALE :- 1:.....

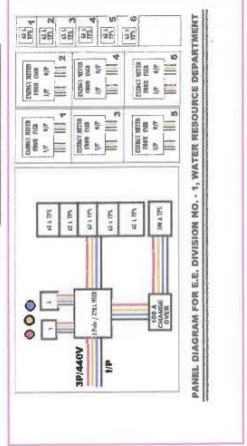
GOVERNMENT OF CHHATTISGARH, WATER RESOURCES DEPARTMENT		
WATER RESOURCES DIVISION NO. 01 AMBIKAPUR		
RENOVATION WORK OF THE OFFICE OF EXECUTIVE ENGINEER		
WATER RESOURCES DIVISION NO. 1 AMBIKAPUR		
PREPARED BY  SUB ENGINEER SHYAM CANAL SUB DIV NO. 01 AMBIKAPUR (C.G.)	CHECKED BY  ASSISTANT ENGINEER (D) W.R. SHYAM BARNAI P. CIRCLE AMBIKAPUR (C.G.)	CHECKED BY ASSISTANT ENGINEER (D) HASDEO GANGA BASIN AMBIKAPUR (C.G.)
CHECKED BY  SUB DIVISIONAL OFFICER SHYAM CANAL SUB DIV NO. 01 AMBIKAPUR (C.G.)	CHECKED BY SUB DIVISIONAL OFFICER SHYAM CANAL SUB DIV NO. 01 AMBIKAPUR (C.G.)	CHECKED BY EXECUTIVE ENGINEER (D) HASDEO GANGA BASIN AMBIKAPUR (C.G.)
CHECKED BY ASSISTANT ENGINEER (D) WATER RESOURCES DIVISION NO.1 AMBIKAPUR (C.G.)	CHECKED BY  EXECUTIVE ENGINEER (D) W.R. SHYAM BARNAI P. CIRCLE AMBIKAPUR (C.G.)	CHECKED BY SUPERINTENDING ENGINEER (D) HASDEO GANGA BASIN AMBIKAPUR (C.G.)
SUBMITTED BY  EXECUTIVE ENGINEER WATER RESOURCES DIVISION NO.1 AMBIKAPUR (C.G.)	RECOMMENDED BY  SUPERINTENDING ENGINEER W.R. SHYAM BARNAI P. CIRCLE AMBIKAPUR (C.G.)	RECOMMENDED BY CHIEF ENGINEER HASDEO GANGA BASIN AMBIKAPUR (C.G.)



LEGEND:-	DESCRIPTION	MT HEIGHT (MM)
	LED PANEL LIGHT	ON CEILING
	120MM CEILING FAN	ON CEILING
	TUBELIGHT	AS DR. ENGR.
	SWITCH BOARD	AS DR. ENGR.
	COMPUTER BOARD	AS DR. ENGR.
	POWER SOCKET BOARD	AS DR. ENGR.
	EXHAUST FAN	AS DR. ENGR.
	LED SQUARE PANEL LIGHT	AS DR. ENGR.
	LED STREET LIGHT	AS DR. ENGR.

LEGEND:-	DESCRIPTION	MT HEIGHT (MM)
	MCP BOX	AS DR. ENGR.
	CCTV CAMERA	ON CEILING
	SMOKE DETECTOR	ON CEILING
	HOOTER C.M. STROBE FLASHER	2400 MM
	MANUAL CALL POINT	AS DR. ENGR.
	FIRE CONTROL PANEL	AS DR. ENGR.
	AC POINT	AS DR. ENGR.

GROUND FLOOR PLAN



GOVERNMENT OF CHHATTISGARH, WATER RESOURCES DEPARTMENT			
WATER RESOURCES DIVISION NO. 01 AMBIKAPUR			
RENOVATION WORK OF THE OFFICE OF EXECUTIVE ENGINEER			
WATER RESOURCES DIVISION NO. 1 AMBIKAPUR			
PREPARED BY SUB ENGINEER SHYAM CANAL SUB DIV NO. 01 AMBIKAPUR (C.G.)	CHECKED BY ASSISTANT ENGINEER (D) W.R. SHYAM BARNAI P. CIRCLE AMBIKAPUR (C.G.)	CHECKED BY ASSISTANT ENGINEER (D) HASDEO GANGA BASIN AMBIKAPUR (C.G.)	CHECKED BY EXECUTIVE ENGINEER (D) HASDEO GANGA BASIN AMBIKAPUR (C.G.)
CHECKED BY SUB DIVISIONAL ENGINEER SHYAM CANAL SUB DIV NO. 01 AMBIKAPUR (C.G.)	CHECKED BY EXECUTIVE ENGINEER (D) W.R. SHYAM BARNAI P. CIRCLE AMBIKAPUR (C.G.)	CHECKED BY SUPERINTENDING ENGINEER (D) HASDEO GANGA BASIN AMBIKAPUR (C.G.)	CHECKED BY CHIEF ENGINEER HASDEO GANGA BASIN AMBIKAPUR (C.G.)
CHECKED BY ASSISTANT ENGINEER (D) WATER RESOURCES DIVISION NO. 1 AMBIKAPUR (C.G.)	CHECKED BY SUPERINTENDING ENGINEER W.R. SHYAM BARNAI P. CIRCLE AMBIKAPUR (C.G.)	CHECKED BY CHIEF ENGINEER HASDEO GANGA BASIN AMBIKAPUR (C.G.)	CHECKED BY CHIEF ENGINEER HASDEO GANGA BASIN AMBIKAPUR (C.G.)
SUBMITTED BY SUPERINTENDING ENGINEER WATER RESOURCES DIVISION NO. 1 AMBIKAPUR (C.G.)	SUBMITTED BY SUPERINTENDING ENGINEER W.R. SHYAM BARNAI P. CIRCLE AMBIKAPUR (C.G.)	SUBMITTED BY CHIEF ENGINEER HASDEO GANGA BASIN AMBIKAPUR (C.G.)	SUBMITTED BY CHIEF ENGINEER HASDEO GANGA BASIN AMBIKAPUR (C.G.)

DRAWING NAME :-
**GROUND FLOOR
ELECTRICAL LIGHTING,
CCTV, FIRE LAYOUT**

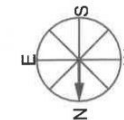
SCALE :- 1:120



LEGEND--	DESCRIPTION	MT HEIGHT (MM)
□	LED PANEL LIGHT	ON CEILING
□	1200MM CEILING FAN	ON CEILING
□	TUBELIGHT LIGHT	AS DIR. ENGR.
□	SWITCH BOARD	AS DIR. ENGR.
□	COMPUTER BOARD	AS DIR. ENGR.
□	POWER SOCKET BOARD	AS DIR. ENGR.
□	EXHAUST FAN	AS DIR. ENGR.
□	LED SQUARE PANEL LIGHT	AS DIR. ENGR.
□	LED STREET LIGHT	AS DIR. ENGR.

LEGEND--	DESCRIPTION	MT HEIGHT (MM)
□	MODE BOX	AS DIR. ENGR.
□	CCTV CAMERA	ON CEILING
□	SMOKE DETECTOR	ON CEILING
□	HOOTER CUM STROBE FLASHER	2400 MM
□	MANUAL CALL POINT	AS DIR. ENGR.
□	FIRE CONTROL PANEL	AS DIR. ENGR.
□	AC POINT	AS DIR. ENGR.

OPEN TERRACE
6300X4500



FIRST FLOOR PLAN

DRAWING NAME :-

**1ST & 2ND FLOOR
ELECTRICAL LIGHTING,
CCTV, FIRE LAYOUT**

SCALE :- 1:120

GOVERNMENT OF CHHATTISGARH, WATER RESOURCES DEPARTMENT			
WATER RESOURCES DIVISION NO. 01 AMBIKAPUR			
RENOVATION WORK OF THE OFFICE OF EXECUTIVE ENGINEER WATER RESOURCES DIVISION NO. 1 AMBIKAPUR			
PREPARED BY SUB ENGINEER SHYAM KANAL, SUB DIV. NO. 01 AMBIKAPUR (C.G.)	CHECKED BY ASSISTANT ENGINEER (D) W.R. SHYAM BARNAI P. CIRCLE AMBIKAPUR (C.G.)	CHECKED BY ASSISTANT ENGINEER (D) HARDEO GANGA BASIN AMBIKAPUR (C.G.)	
CHECKED BY SUB DIVISIONAL OFFICER SHYAM KANAL, SUB DIV. NO. 01 AMBIKAPUR (C.G.)	CHECKED BY EXECUTIVE ENGINEER (D) W.R. SHYAM BARNAI P. CIRCLE AMBIKAPUR (C.G.)	CHECKED BY EXECUTIVE ENGINEER (D) HARDEO GANGA BASIN AMBIKAPUR (C.G.)	
CHECKED BY ASSISTANT ENGINEER (D) WATER RESOURCES DIVISION NO. 1 AMBIKAPUR (C.G.)	RECOMMENDED BY EXECUTIVE ENGINEER (D) W.R. SHYAM BARNAI P. CIRCLE AMBIKAPUR (C.G.)	RECOMMENDED BY SUPERINTENDING ENGINEER (D) HARDEO GANGA BASIN AMBIKAPUR (C.G.)	
SUBMITTED BY EXECUTIVE ENGINEER WATER RESOURCES DIVISION NO. 1 AMBIKAPUR (C.G.)	RECOMMENDED BY SUPERINTENDING ENGINEER W.R. SHYAM BARNAI P. CIRCLE AMBIKAPUR (C.G.)	APPROVED BY CHIEF ENGINEER HARDEO GANGA BASIN AMBIKAPUR (C.G.)	